

Data Summary Pages
for
Yathkyed Lake

Regional Geochemical Survey

A.A. and N.A.A. analyses

Compositional Analysis of Till Samples

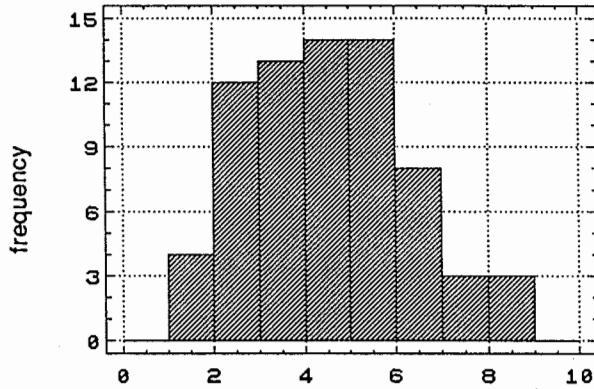
Variable: Cobalt (ppm)

Sample preparation method: 230 mesh screen, dry
 Analytical preparation method: HCl-HNO₃ (1:3) extraction

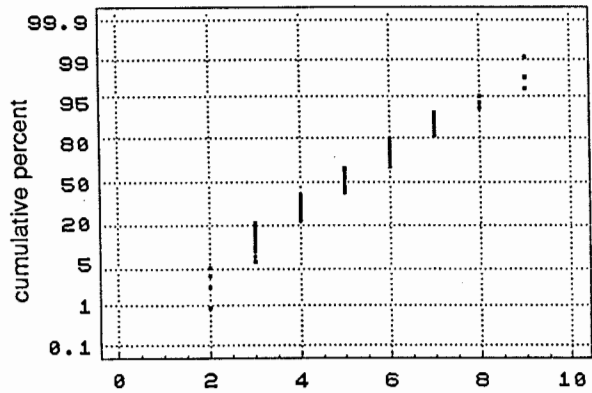
Analytical method: Flame A.A.
 Detection limit: 1 ppm

No. of obs.:	71	Mode:	6	Variance:	3.11
Minimum:	2	Geometric mean:	4.71	Coefficient of variance:	0.35
Maximum:	9	Median:	5	Skewness:	0.31
Mean:	5.03	Standard deviation:	1.76	Kurtosis:	-0.45

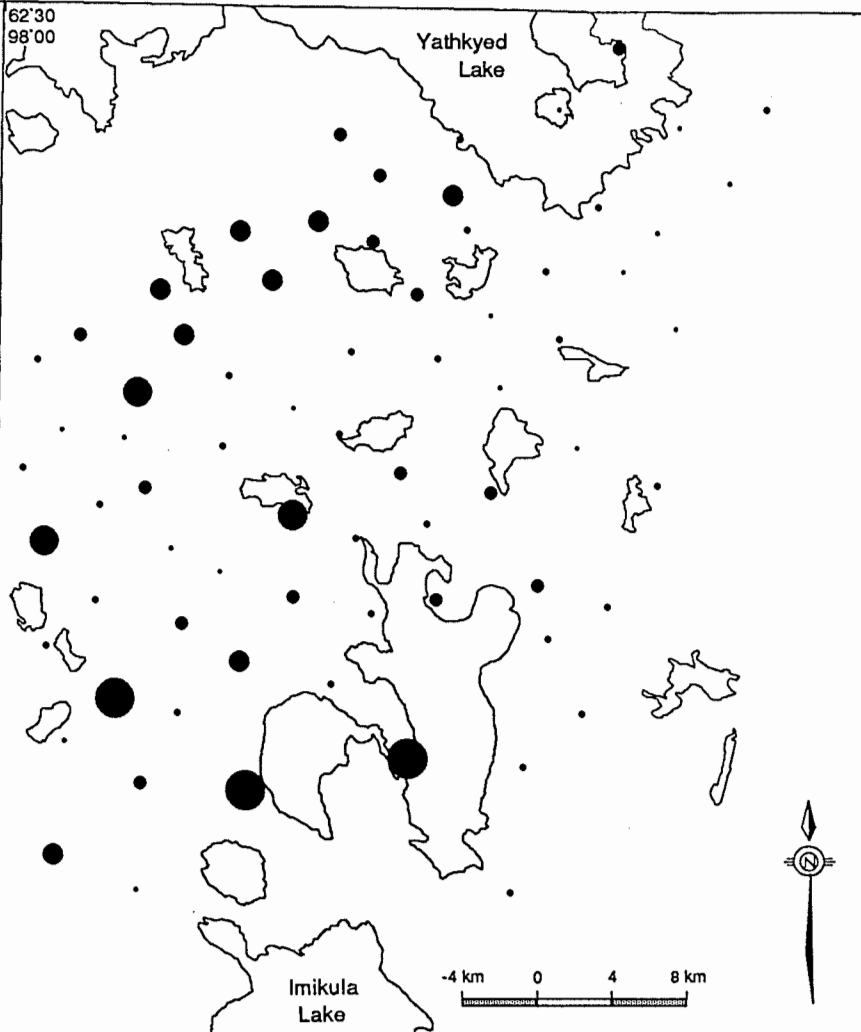
Frequency Histogram



Normal Probability Plot



62°30'
98°00'



SIZE	RANGE (ppm)		OBS.	%TILE
	LOW	HIGH		
•	2	3	16	22.5
•	3	5	27	60.6
•	5	6	14	80.3
•	6	7	8	91.5
•	7	8	3	95.8
•	8	9	3	100

62°00'
97°05'

Compositional Analysis of Till Samples

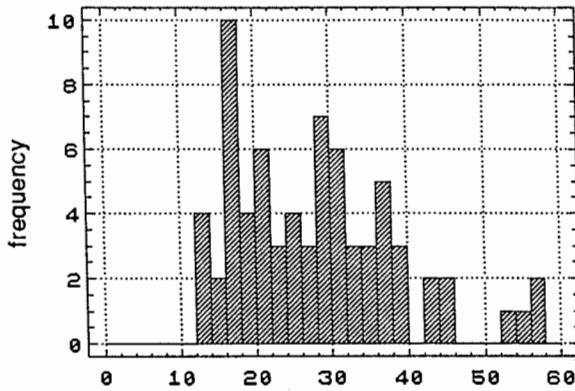
Variable: Chromium (ppm)

Sample preparation method: 230 mesh screen, dry
 Analytical preparation method: HCl-HNO₃ (1:3) extraction

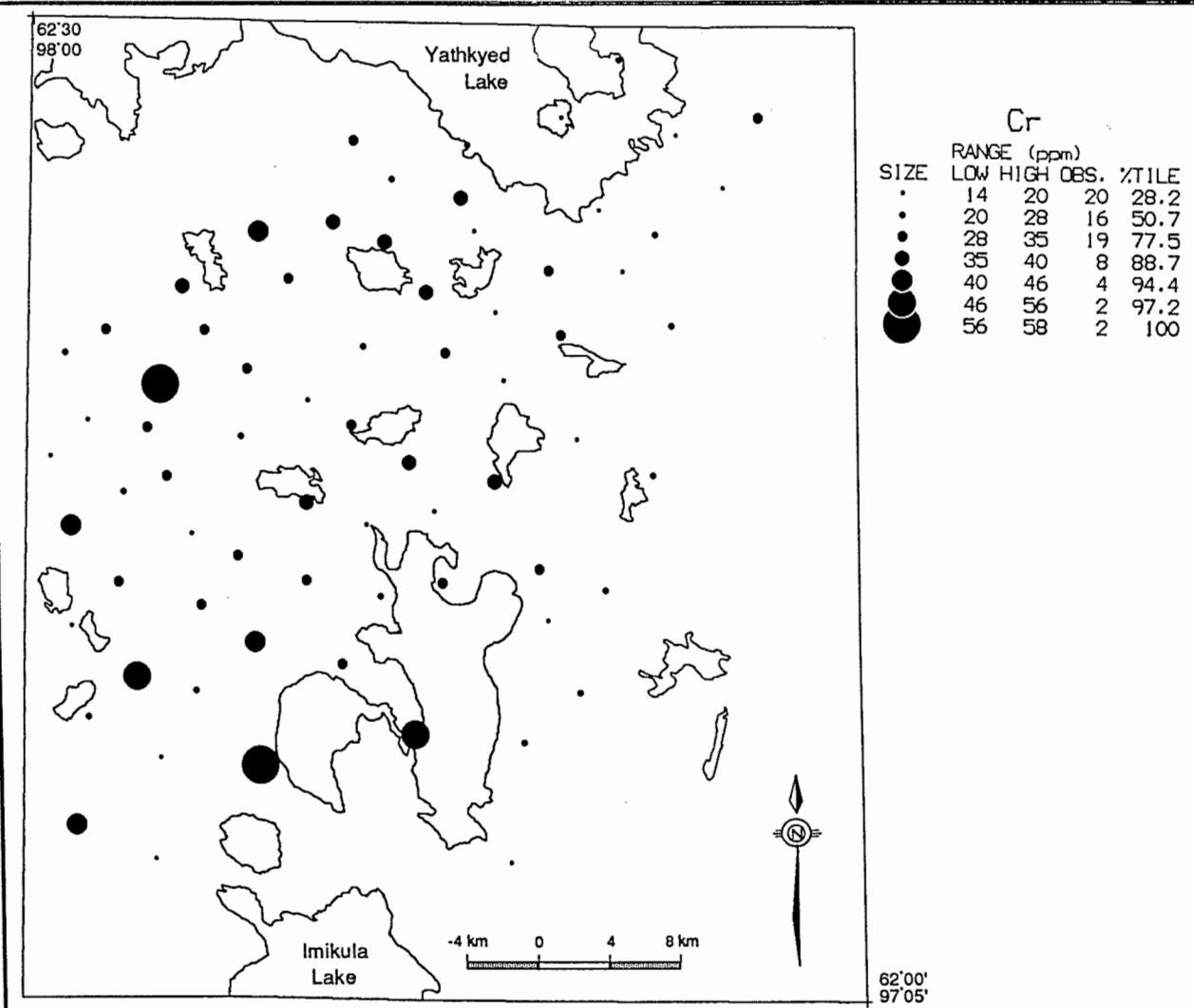
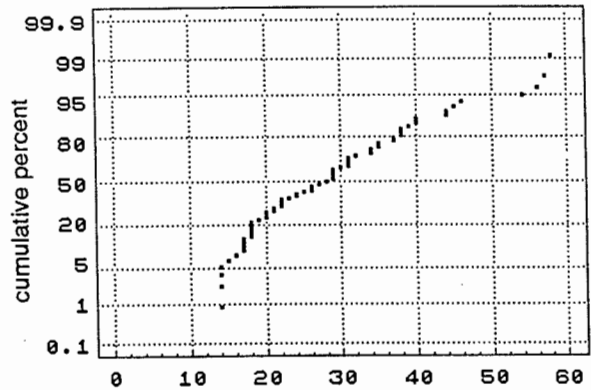
Analytical method: Flame A.A.
 Detection limit: 1 ppm

No. of obs.:	71	Mode:	29	Variance:	118.07
Minimum:	14	Geometric mean:	26.80	Coefficient of variance:	0.38
Maximum:	58	Median:	28	Skewness:	0.84
Mean:	28.69	Standard deviation:	10.87	Kurtosis:	0.38

Frequency Histogram



Normal Probability Plot



Compositional Analysis of Till Samples

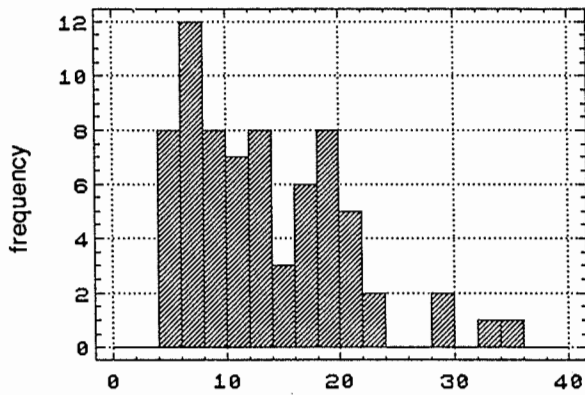
Variable: Copper (ppm)

Sample preparation method: 230 mesh screen, dry
 Analytical preparation method: HCl-HNO₃ (1:3) extraction

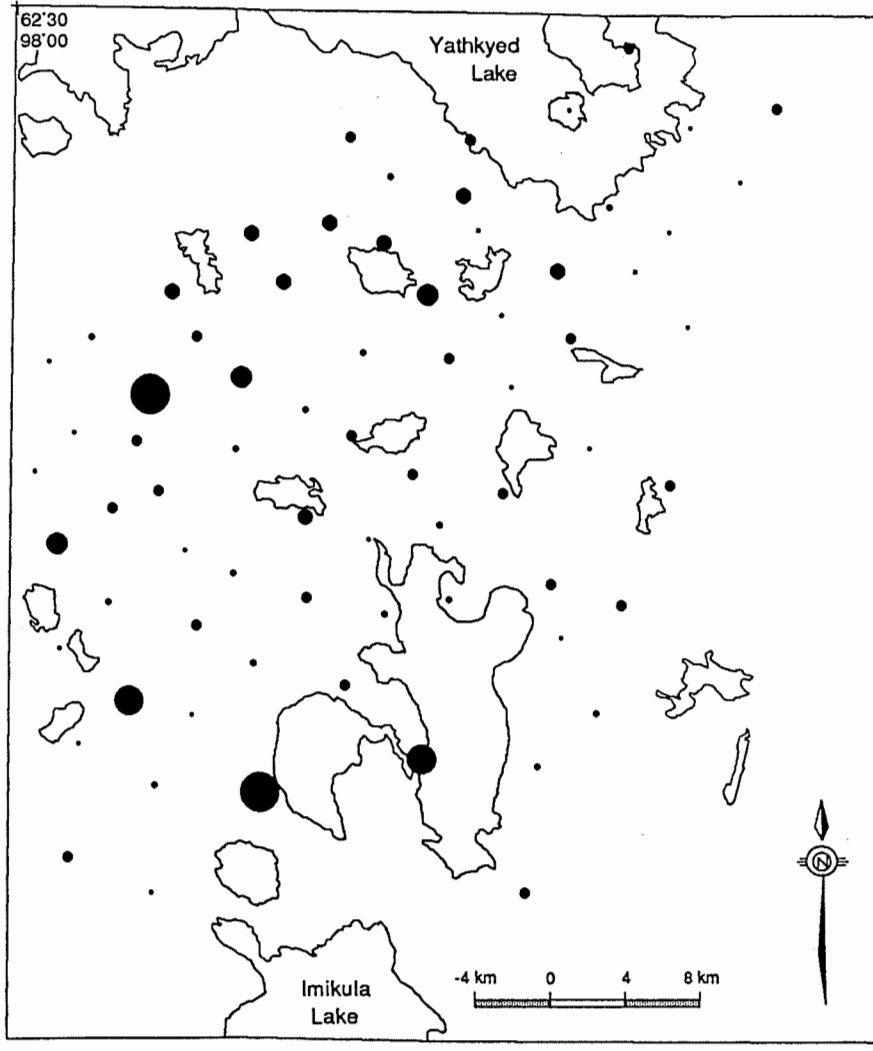
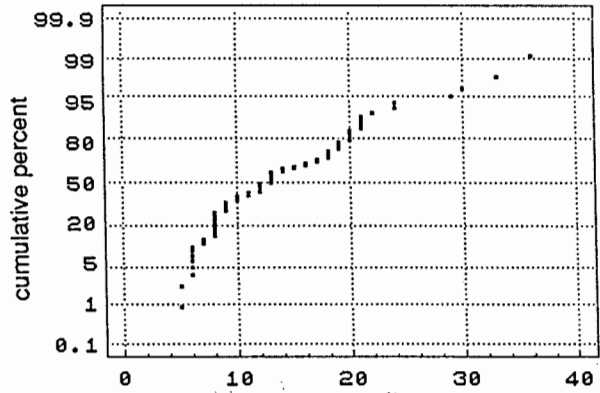
Analytical method: Flame A.A.
 Detection limit: 1 ppm

No. of obs.:	71	Mode:	8	Variance:	47.74
Minimum:	5	Geometric mean:	12.47	Coefficient of variance:	0.49
Maximum:	36	Median:	13	Skewness:	0.99
Mean:	14	Standard deviation:	6.91	Kurtosis:	0.85

Frequency Histogram



Normal Probability Plot



Cu

SIZE	RANGE (ppm)		OBS.	%TILE
	LOW	HIGH		
•	5	8	20	28.2
•	8	12	15	49.3
•	12	19	21	78.9
•	19	21	8	90.1
•	21	24	3	94.4
•	24	30	2	97.2
•	30	36	2	100

Compositional Analysis of Till Samples

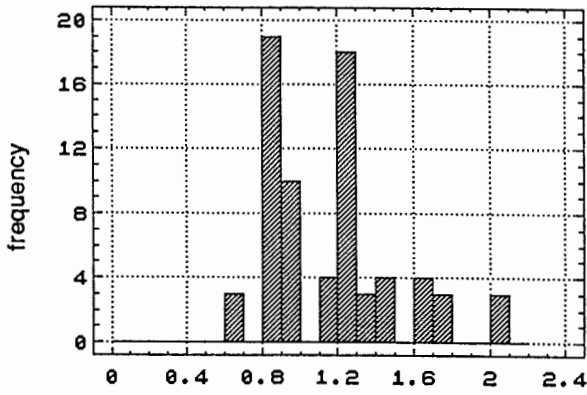
Variable: Iron (%)

Sample preparation method: 230 mesh screen, dry
 Analytical preparation method: HCl-HNO₃ (1:3) extraction

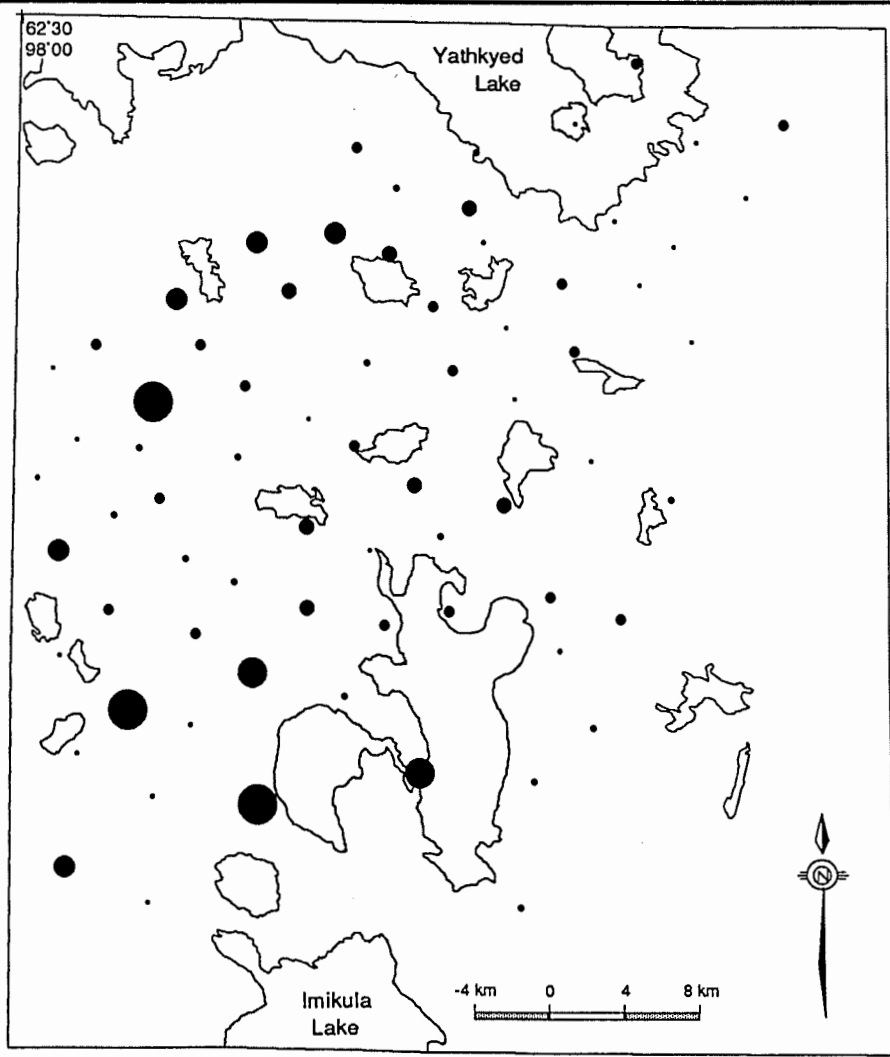
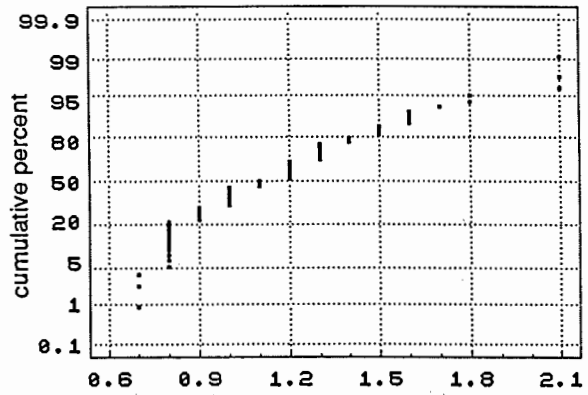
Analytical method: Flame A.A.
 Detection limit: 0.1 %

No. of obs.:	71	Mode:	0.8	Variance:	0.12
Minimum:	0.7	Geometric mean:	1.12	Coefficient of variance:	0.30
Maximum:	2.1	Median:	1.1	Skewness:	0.89
Mean:	1.17	Standard deviation:	0.34	Kurtosis:	0.48

Frequency Histogram



Normal Probability Plot



Fe

SIZE	RANGE (wt.%)	LOW	HIGH	OBS.	%TILE
•	0.69 - 0.90	0.69	0.90	22	31
•	0.90 - 1.10	0.90	1.10	14	50.7
•	1.10 - 1.30	1.10	1.30	18	76.1
•	1.30 - 1.50	1.30	1.50	7	85.9
•	1.50 - 1.70	1.50	1.70	5	93
•	1.70 - 1.80	1.70	1.80	2	95.8
•	1.80 - 2.10	1.80	2.10	3	100

Compositional Analysis of Till Samples

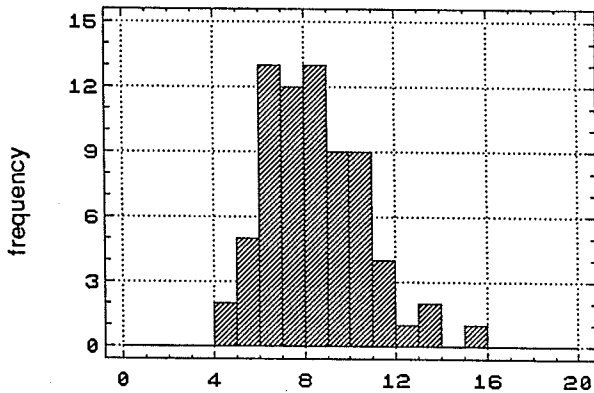
Variable: Lead (ppm)

Sample preparation method: 230 mesh screen, dry
 Analytical preparation method: HCl-HNO₃ (1:3) extraction

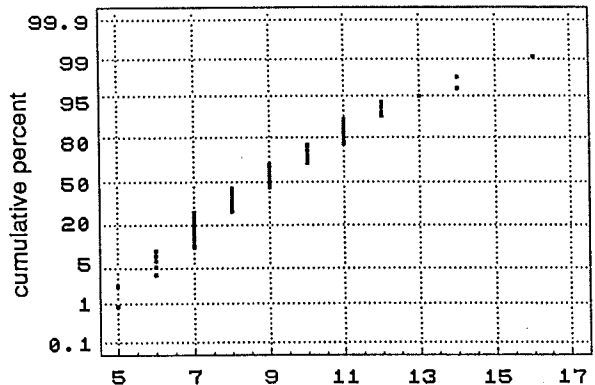
Analytical method: Flame A.A.
 Detection limit: 2 ppm

No. of obs.:	71	Mode:	9	Variance:	4.81
Minimum:	5	Geometric mean:	8.73	Coefficient of variance:	0.24
Maximum:	16	Median:	9	Skewness:	0.67
Mean:	8.98	Standard deviation:	2.19	Kurtosis:	0.59

Frequency Histogram



Normal Probability Plot



62°30'
98°00'



Pb

SIZE	RANGE (ppm)		OBS.	%TILE
	LOW	HIGH		
•	5	7	20	28.2
•	7	8	12	45.1
•	8	10	22	76.1
•	10	11	9	88.7
•	11	12	4	94.4
•	12	14	3	98.6
•	14	16	1	100

62°00'
97°05'

Compositional Analysis of Till Samples

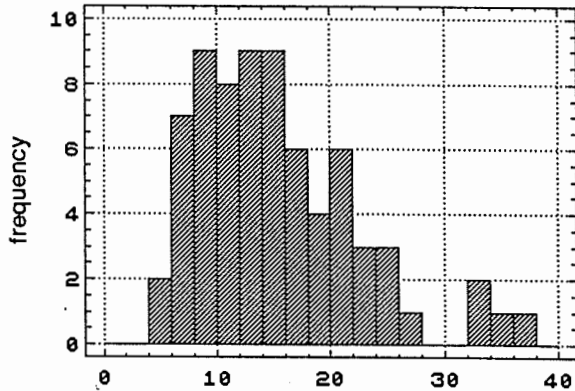
Variable: Nickel (ppm)

Sample preparation method: 230 mesh screen, dry
 Analytical preparation method: HCl-HNO₃ (1:3) extraction

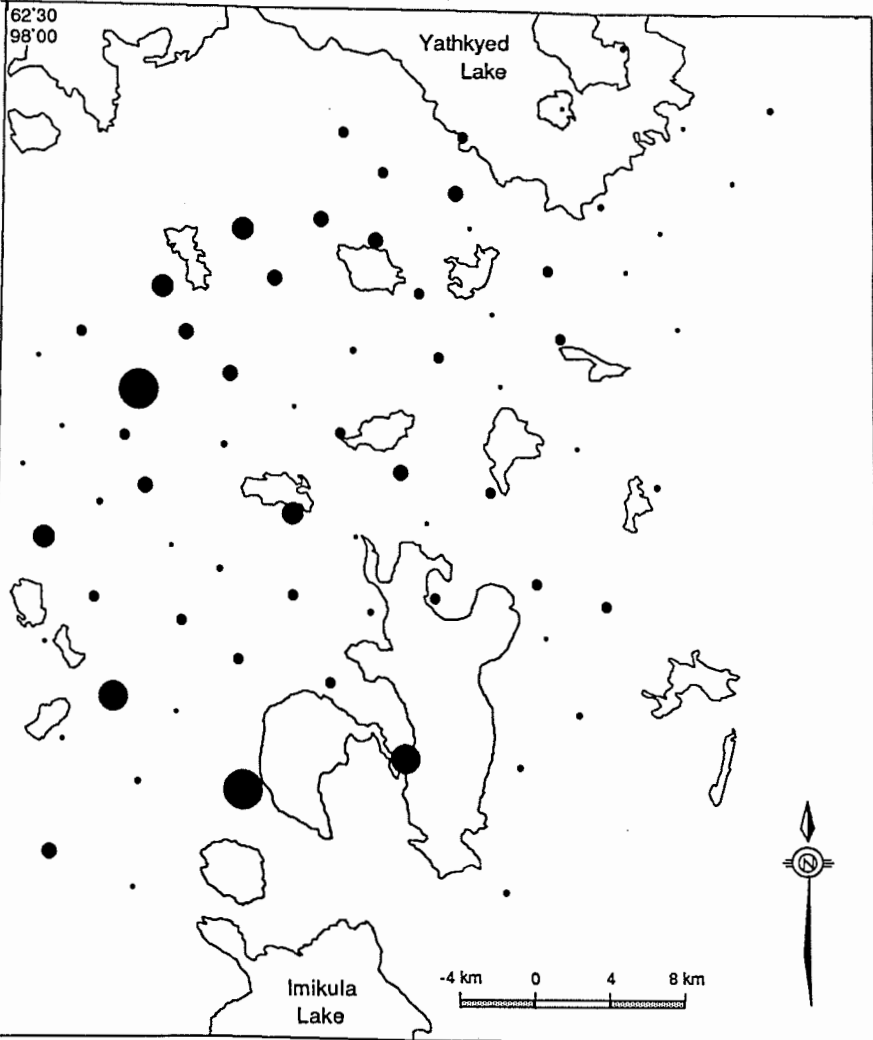
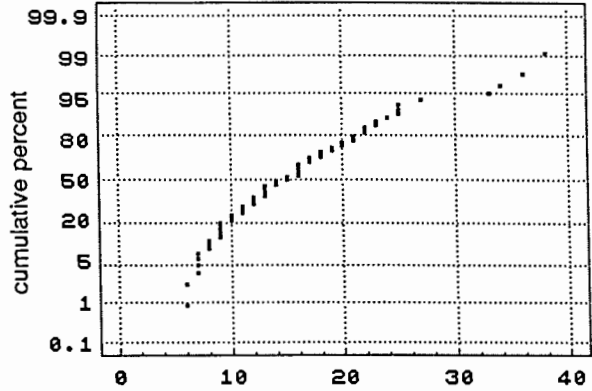
Analytical method: Flame A.A.
 Detection limit: 2 ppm

No. of obs.:	71	Mode:	16	Variance:	51.71
Minimum:	6	Geometric mean:	14.42	Coefficient of variance:	0.45
Maximum:	38	Median:	15	Skewness:	1.05
Mean:	15.87	Standard deviation:	7.19	Kurtosis:	1.10

Frequency Histogram



Normal Probability Plot



Ni

SIZE	RANGE (ppm)		OBS.	%TILE
	LOW	HIGH		
•	6	11	22	31
•	11	14	13	49.3
•	14	20	19	76.1
•	20	24	9	88.7
•	24	27	4	94.4
•	27	34	2	97.2
•	34	38	2	100

62°00'
97°05'

Compositional Analysis of Till Samples

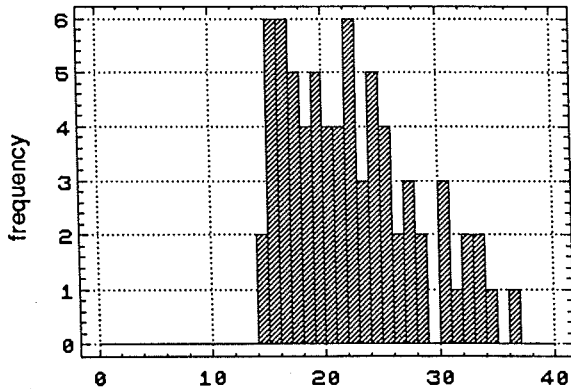
Variable: Vanadium (ppm)

Sample preparation method: 230 mesh screen, dry
 Analytical preparation method: HCl-HNO₃ (1:3) extraction

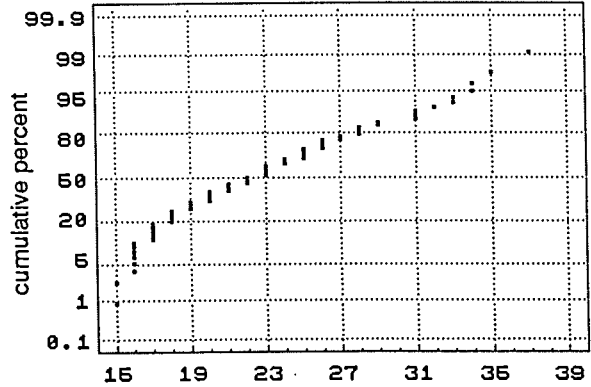
Analytical method: Flame A.A.
 Detection limit: 1 ppm

No. of obs.:	71	Mode:	16	Variance:	31.21
Minimum:	15	Geometric mean:	22.35	Coefficient of variance:	0.24
Maximum:	37	Median:	22	Skewness:	0.60
Mean:	22.99	Standard deviation:	5.59	Kurtosis:	-0.45

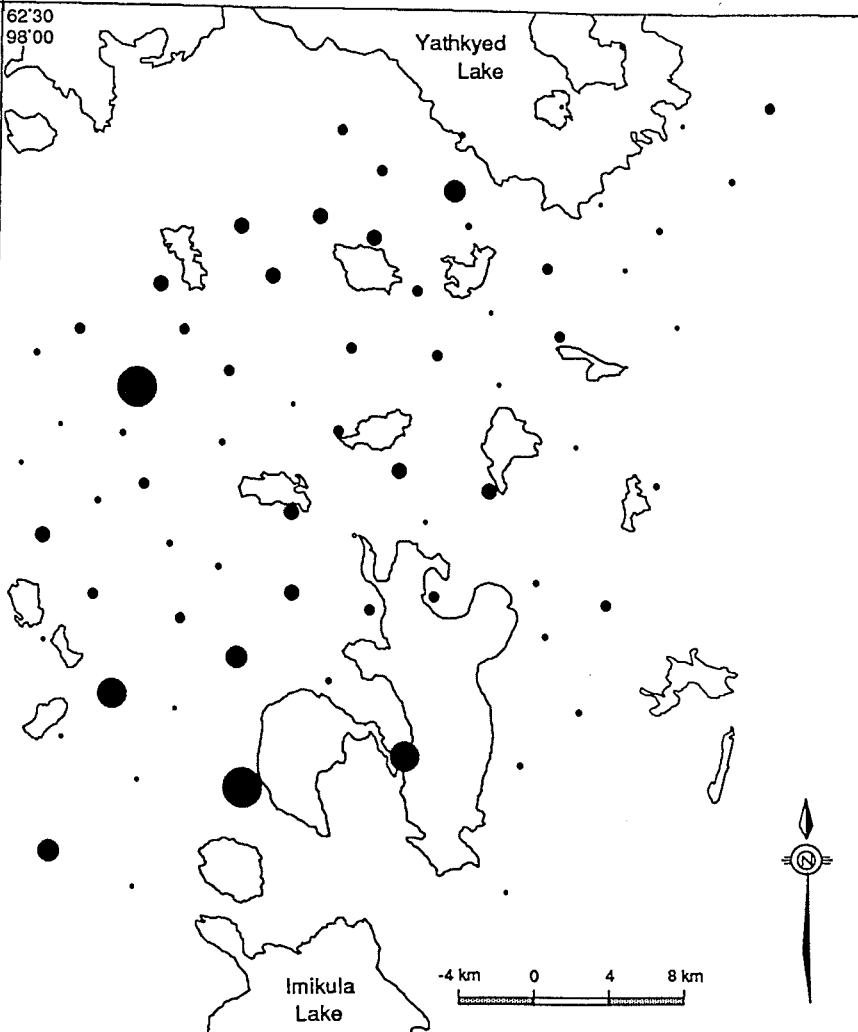
Frequency Histogram



Normal Probability Plot



62°30'
98°00'



V				
SIZE	RANGE (ppm)		OBS.	%TILE
	LOW	HIGH		
•	15	18	19	26.8
•	18	22	17	50.7
•	22	26	18	76.1
•	26	31	10	90.1
•	31	33	3	94.4
•	33	34	2	97.2
•	34	37	2	100

62°00'
97°05'

Compositional Analysis of Till Samples

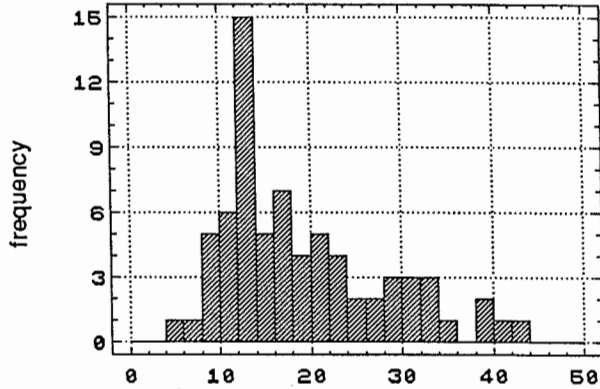
Variable: Zinc (ppm)

Sample preparation method: 230 mesh screen, dry
 Analytical preparation method: HCl-HNO₃ (1:3) extraction

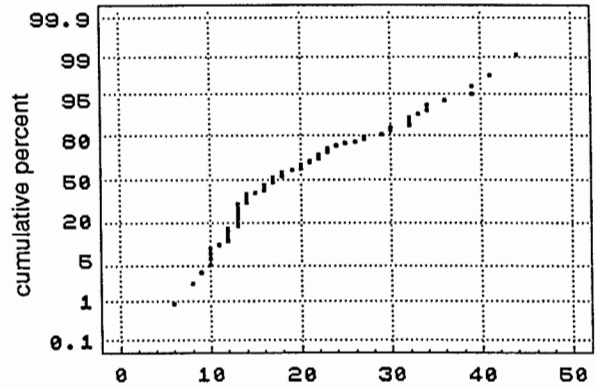
Analytical method: Flame A.A.
 Detection limit: 1 ppm

No. of obs.:	71	Mode:	13	Variance:	79.31
Minimum:	6	Geometric mean:	18.00	Coefficient of variance:	0.45
Maximum:	44	Median:	17	Skewness:	0.90
Mean:	19.79	Standard deviation:	8.91	Kurtosis:	-0.01

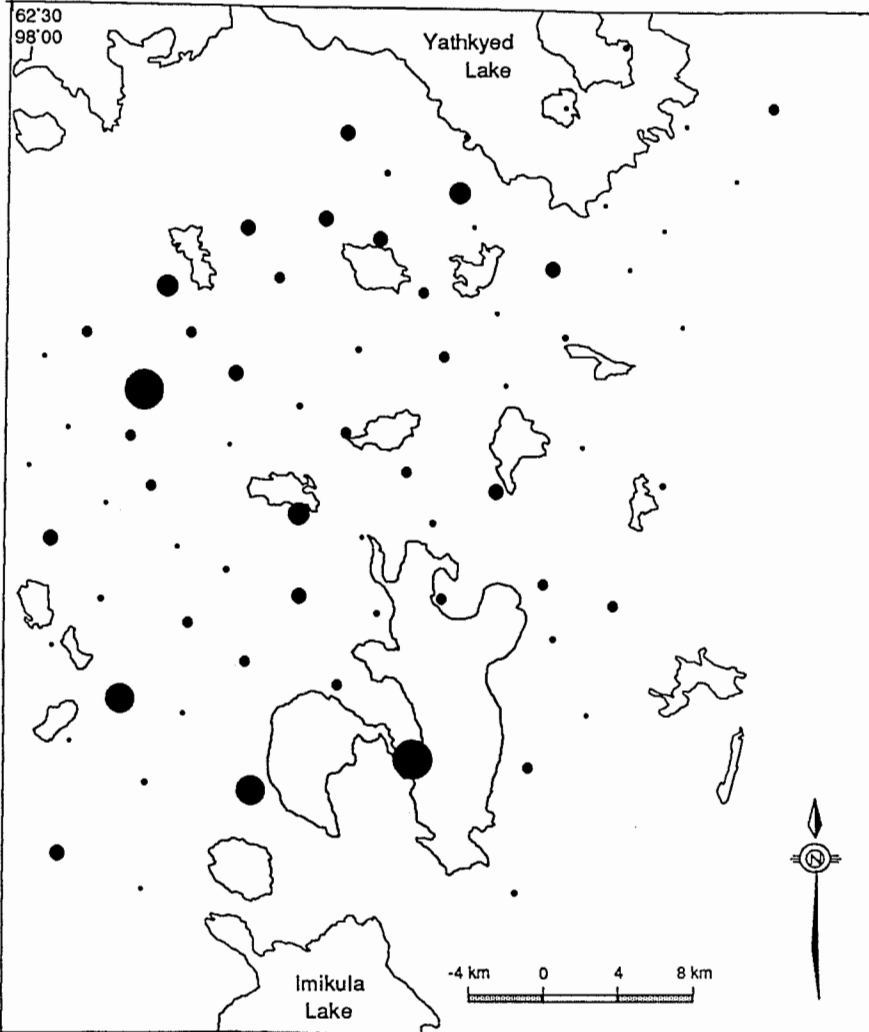
Frequency Histogram



Normal Probability Plot



62°30'
98°00'



Zn				
SIZE	RANGE (ppm)		%TILE	
	LOW	HIGH	OBS.	
•	6	13	23	32.4
•	13	17	14	52.1
•	17	25	17	76.1
•	25	33	10	90.1
•	33	36	3	94.4
•	36	39	2	97.2
•	39	44	2	100

62°00'
97°05'

Compositional Analysis of Till Samples

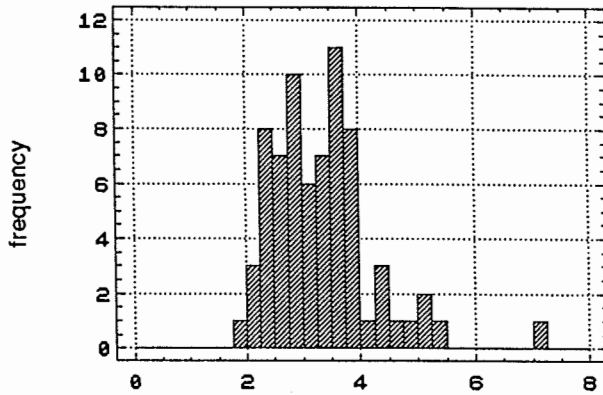
Variable: Arsenic (ppm)

Sample preparation method: 230 mesh screen, dry
Analytical preparation method: 10-15g vial

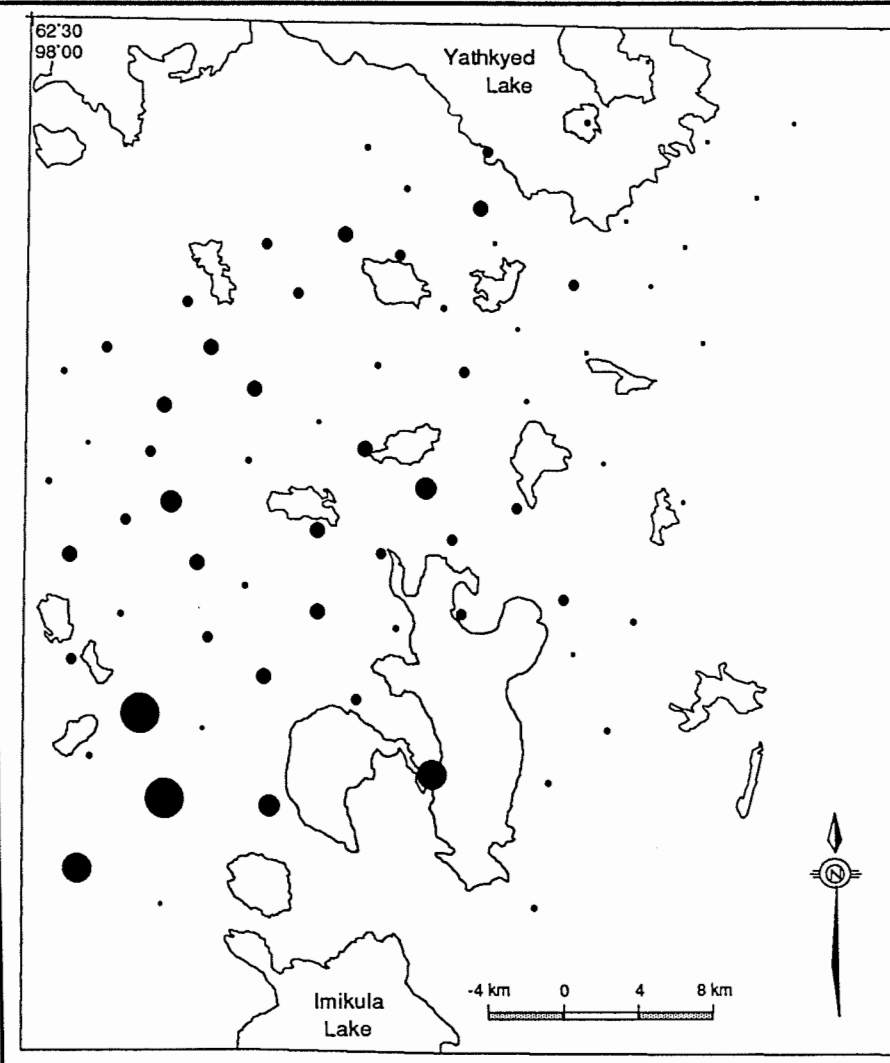
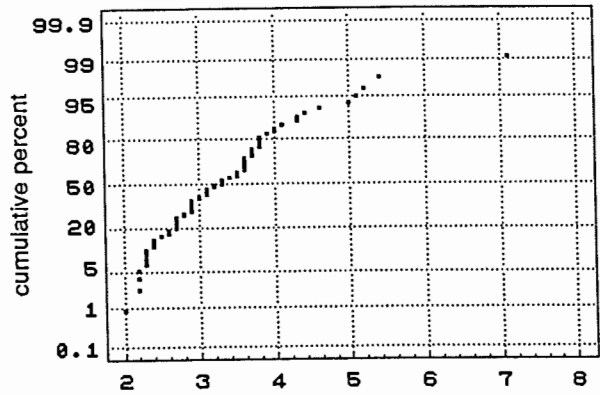
Analytical method: N.A.A.
Detection limit: 0.5 ppm

No. of obs.:	71	Mode:	3.6	Variance:	0.78
Minimum:	2	Geometric mean:	3.25	Coefficient of variance:	0.26
Maximum:	7.1	Median:	3.3	Skewness:	1.38
Mean:	3.35	Standard deviation:	0.89	Kurtosis:	3.63

Frequency Histogram



Normal Probability Plot



As

SIZE	RANGE (ppm)		OBS.	%TILE
	LOW	HIGH		
•	2	2.7	19	26.8
•	2.7	3.2	16	49.3
•	3.2	3.7	18	74.6
•	3.7	4.3	11	90.1
•	4.3	5	3	94.4
•	5	5.2	2	97.2
•	5.2	7.1	2	100

Compositional Analysis of Till Samples

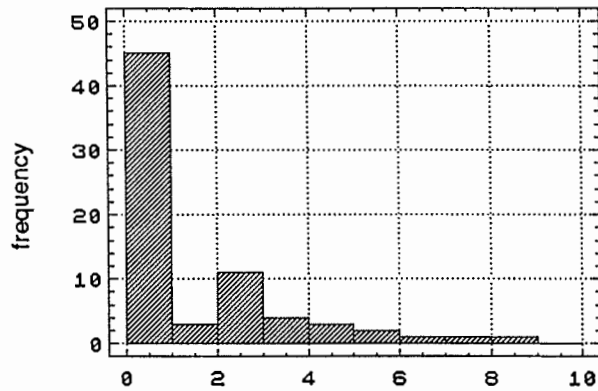
Variable: Gold (ppb)

Sample preparation method: 230 mesh screen, dry
Analytical preparation method: 10-15g vial

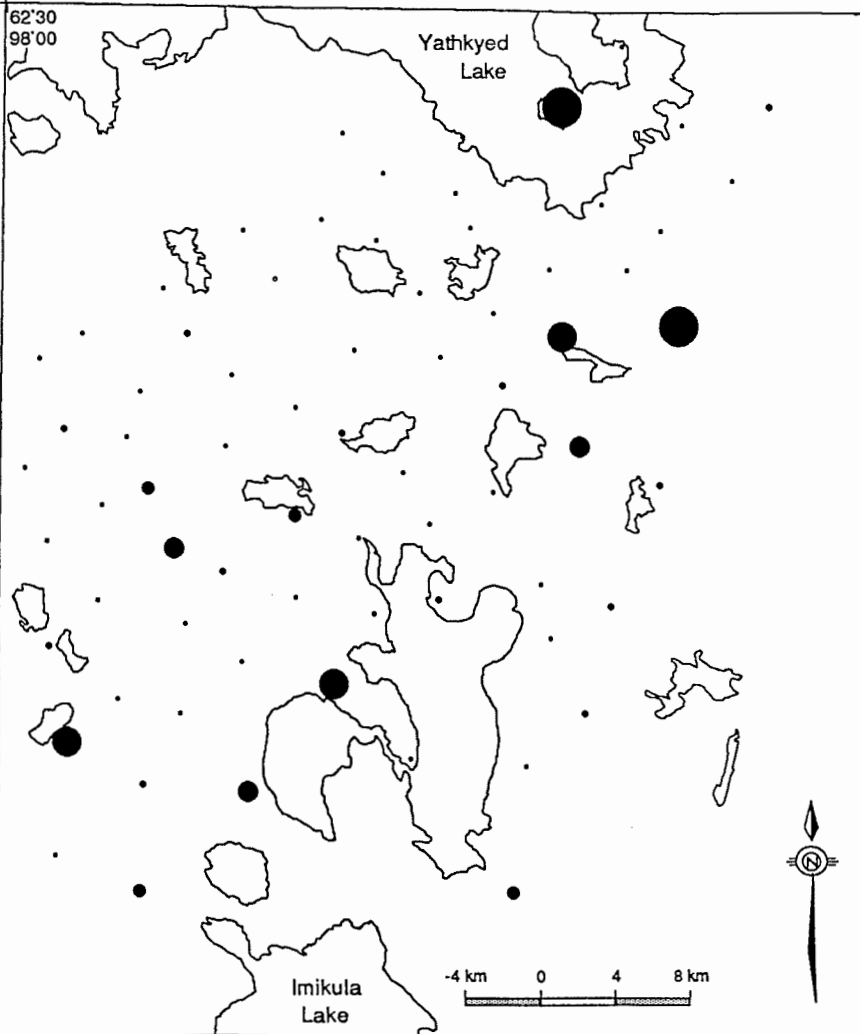
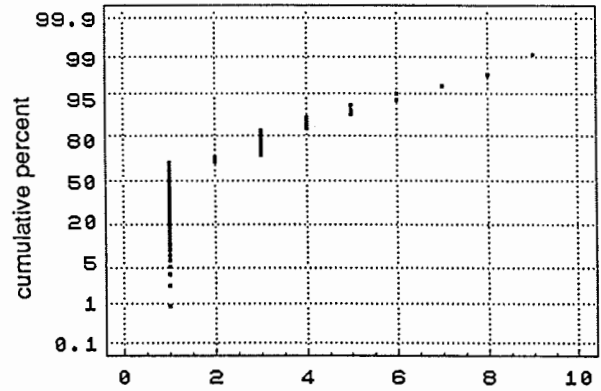
Analytical method: N.A.A.
Detection limit: 2 ppb

No. of obs.:	71	Mode:	1	Variance:	3.43
Minimum:	1	Geometric mean:	1.62	Coefficient of variance:	0.87
Maximum:	9	Median:	1	Skewness:	1.85
Mean:	2.13	Standard deviation:	1.85	Kurtosis:	3.19

Frequency Histogram



Normal Probability Plot



Au

SIZE	RANGE (ppb)		OBS.	%TILE
	LOW	HIGH		
•	1	2	47	66.2
•	2	3	12	83.1
•	3	4	4	88.7
•	4	5	3	93
•	5	7	3	97.2
•	7	9	2	100

Compositional Analysis of Till Samples

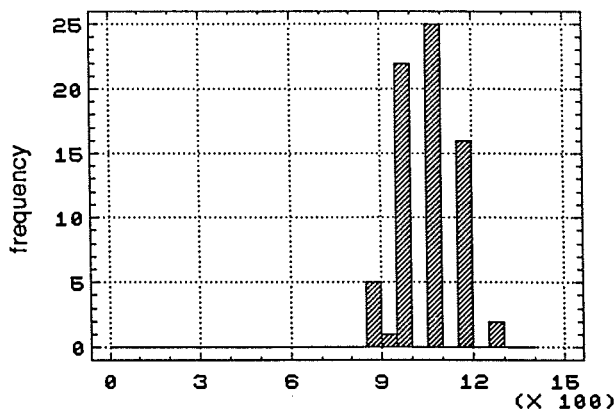
Variable: Barium (ppm)

Sample preparation method: 230 mesh screen, dry
Analytical preparation method: 10-15g vial

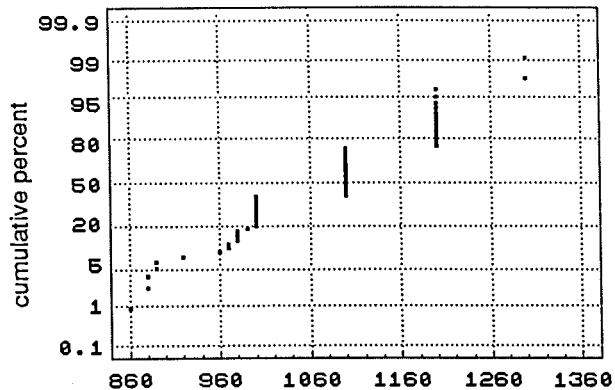
Analytical method: N.A.A.
Detection limit: 50 ppm

No. of obs.:	71	Mode:	1100	Variance:	10554.6
Minimum:	860	Geometric mean:	1071.59	Coefficient of variance:	0.10
Maximum:	1300	Median:	1100	Skewness:	-0.05
Mean:	1076.48	Standard deviation:	102.74	Kurtosis:	-0.58

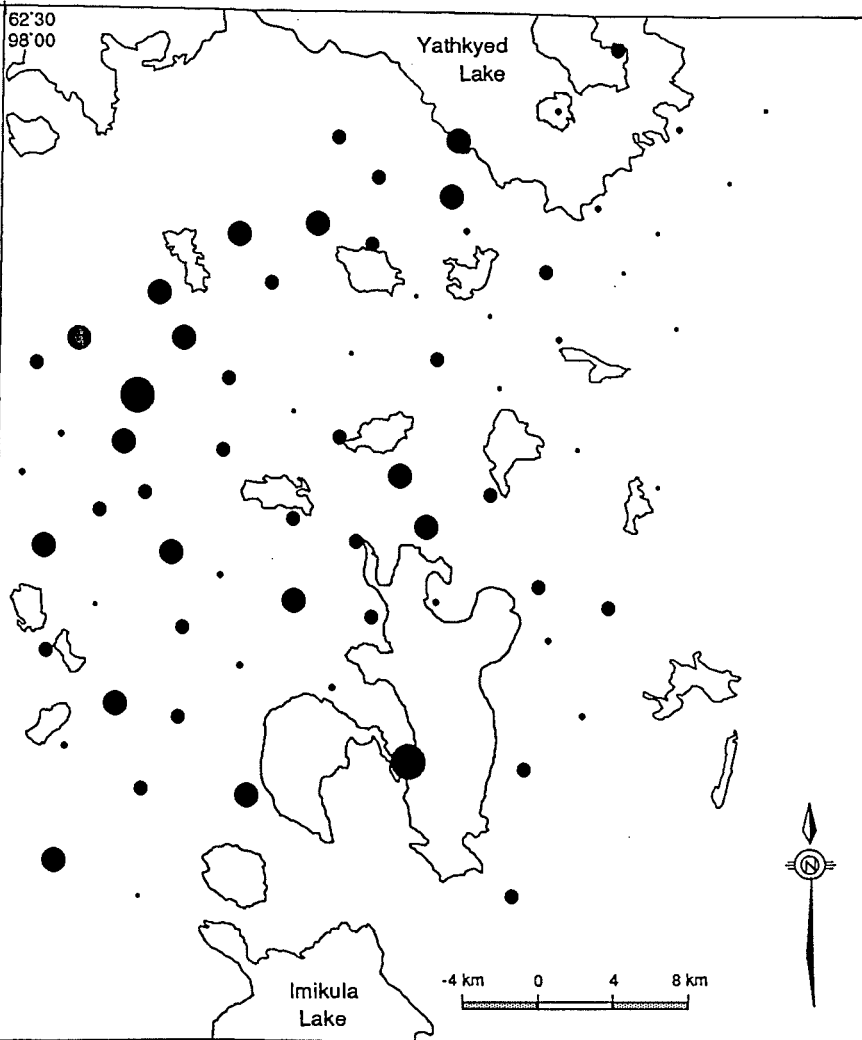
Frequency Histogram



Normal Probability Plot



62°30'
98°00'



Ba

SIZE	RANGE (ppm)		OBS.	%TILE
	LOW	HIGH		
•	860	990	14	19.7
•	990	1000	14	39.4
•	1000	1100	25	74.6
•	1100	1200	16	97.2
•	1200	1300	2	100

62°00'
97°05'

Compositional Analysis of Till Samples

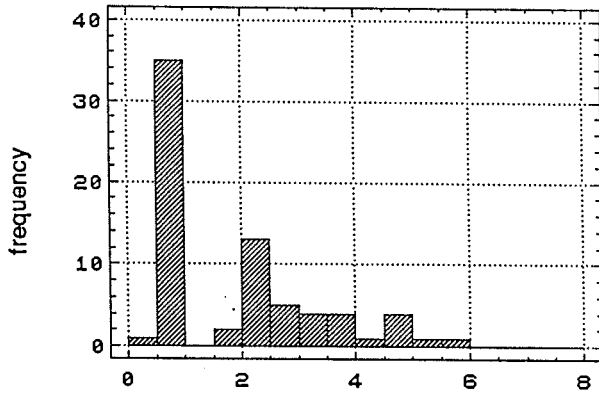
Variable: Bromine (ppm)

Sample preparation method: 230 mesh screen, dry
Analytical preparation method: 10-15g vial

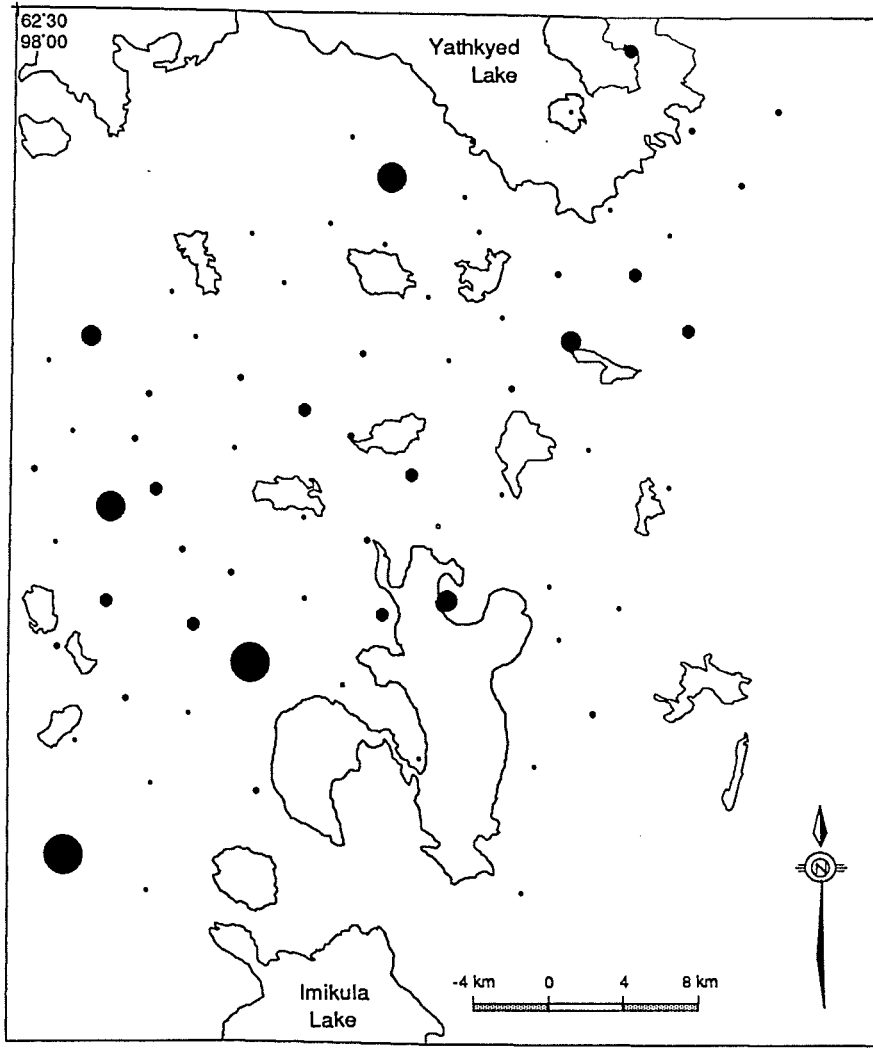
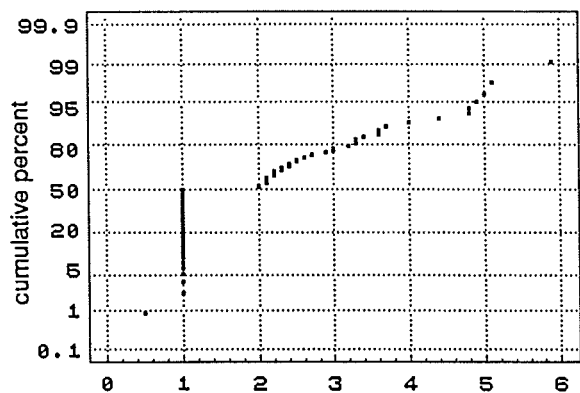
Analytical method: N.A.A.
Detection limit: 0.5 ppm

No. of obs.:	71	Mode:	1	Variance:	1.78
Minimum:	0.5	Geometric mean:	1.70	Coefficient of variance:	0.65
Maximum:	5.9	Median:	1	Skewness:	1.07
Mean:	2.06	Standard deviation:	1.33	Kurtosis:	0.23

Frequency Histogram



Normal Probability Plot



Br

SIZE	RANGE (ppm)		OBS.	%TILE
	LOW	HIGH		
•	1	2	37	52.1
•	2	3	18	77.5
•	3	4.4	9	90.1
•	4.4	4.9	3	94.4
•	4.9	5.1	2	97.2
•	5.1	7.5	2	100

Compositional Analysis of Till Samples

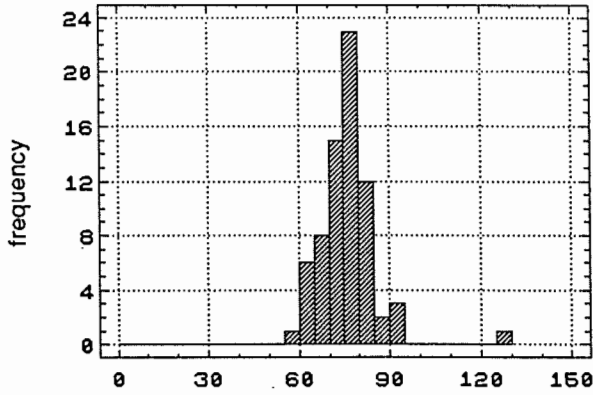
Variable: Cerium (ppm)

Sample preparation method: 230 mesh screen, dry
Analytical preparation method: 10-15g vial

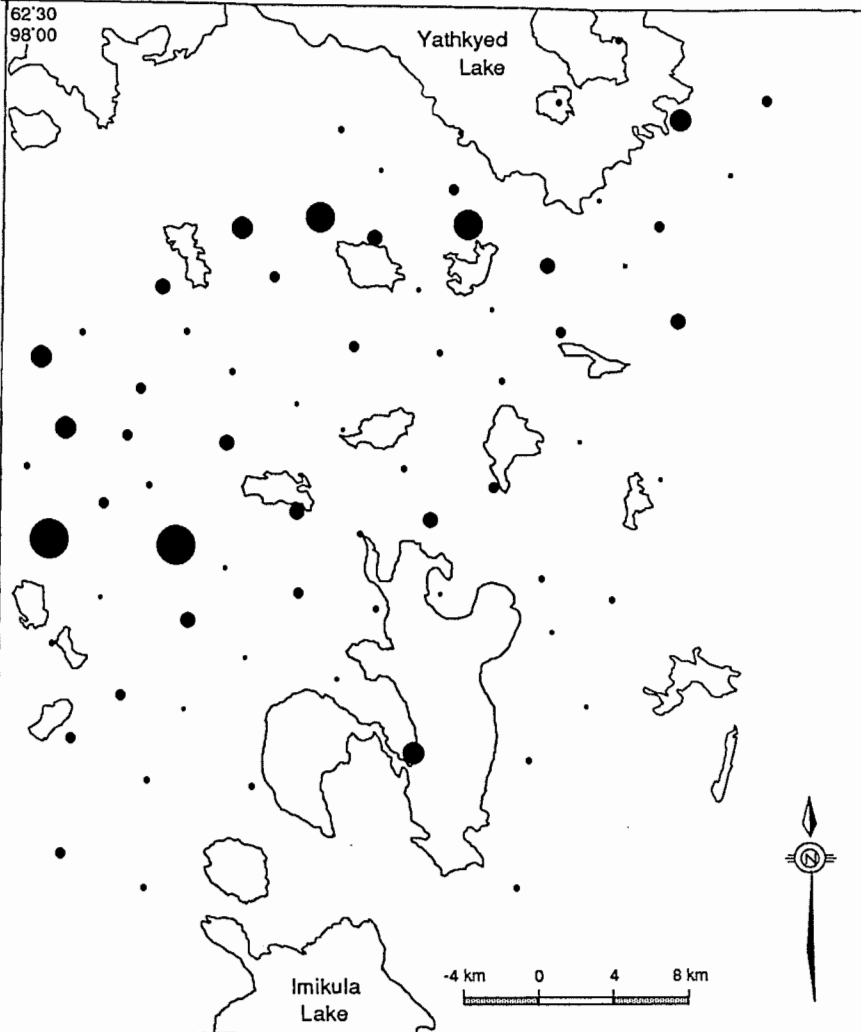
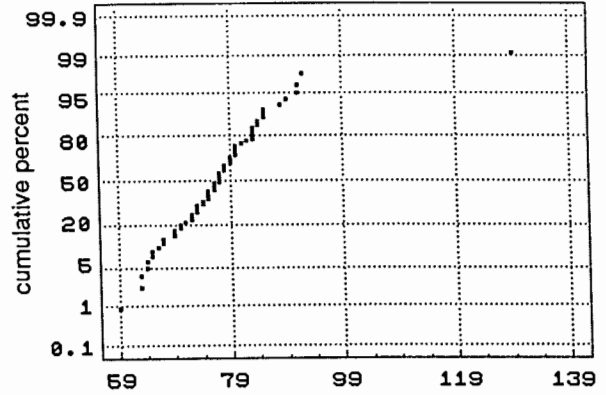
Analytical method: N.A.A.
Detection limit: 5 ppm

No. of obs.:	71	Mode:	77	Variance:	90.46
Minimum:	59	Geometric mean:	76.48	Coefficient of variance:	0.12
Maximum:	129	Median:	77	Skewness:	2.23
Mean:	77	Standard deviation:	9.51	Kurtosis:	11.77

Frequency Histogram



Normal Probability Plot



Ce				
SIZE	RANGE (ppm)		OBS.	%TILE
	LOW	HIGH		
•	59	72	19	26.8
•	72	77	21	56.3
•	77	81	14	76.1
•	81	84	8	87.3
•	84	89	5	94.4
•	89	91	2	97.2
•	91	129	2	100

Compositional Analysis of Till Samples

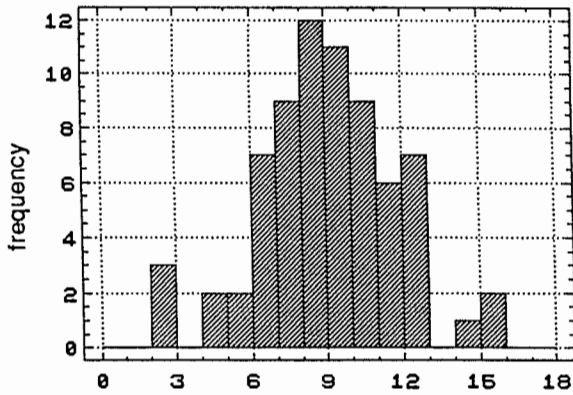
Variable: Cobalt (ppm)

Sample preparation method: 230 mesh screen, dry
Analytical preparation method: 10-15g vial

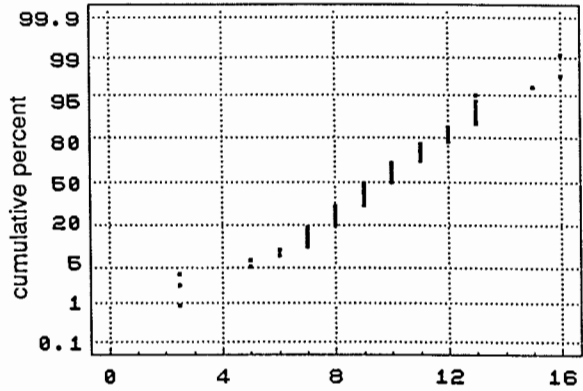
Analytical method: N.A.A.
Detection limit: 5 ppm

No. of obs.:	71	Mode:	9	Variance:	7.71
Minimum:	2.5	Geometric mean:	9.04	Coefficient of variance:	0.29
Maximum:	16	Median:	10	Skewness:	-0.25
Mean:	9.54	Standard deviation:	2.78	Kurtosis:	0.66

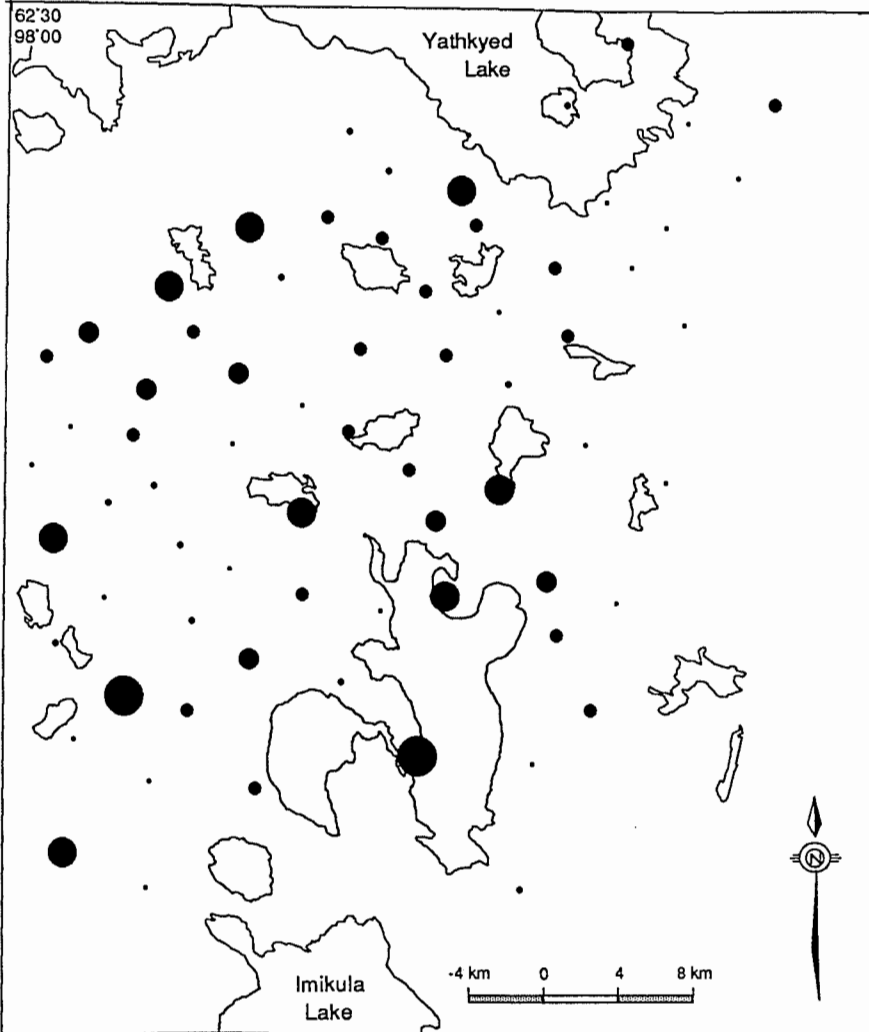
Frequency Histogram



Normal Probability Plot



62°30'
98°00'



SIZE	RANGE (ppm)		OBS.	%TILE
	LOW	HIGH		
•	2.5	8	23	32.4
•	8	9	12	49.3
•	9	11	20	77.5
•	11	12	6	85.9
•	12	15	8	97.2
•	15	16	2	100

62°00'
97°05'

Compositional Analysis of Till Samples

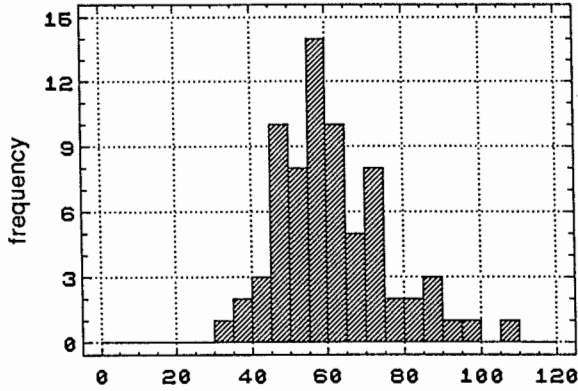
Variable: Chromium (ppm)

Sample preparation method: 230 mesh screen, dry
Analytical preparation method: 10-15g vial

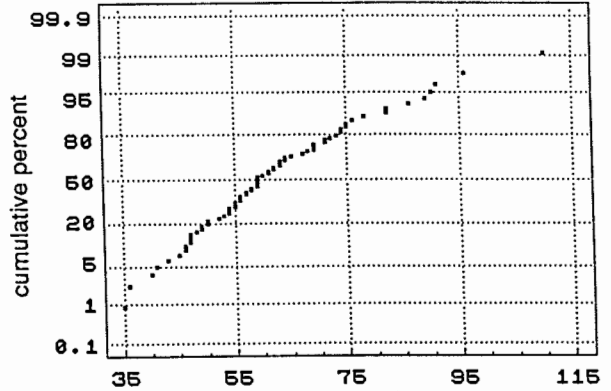
Analytical method: N.A.A.
Detection limit: 20 ppm

No. of obs.:	71	Mode:	59	Variance:	209.11
Minimum:	35	Geometric mean:	60.36	Coefficient of variance:	0.23
Maximum:	110	Median:	59	Skewness:	0.80
Mean:	61.94	Standard deviation:	14.46	Kurtosis:	0.97

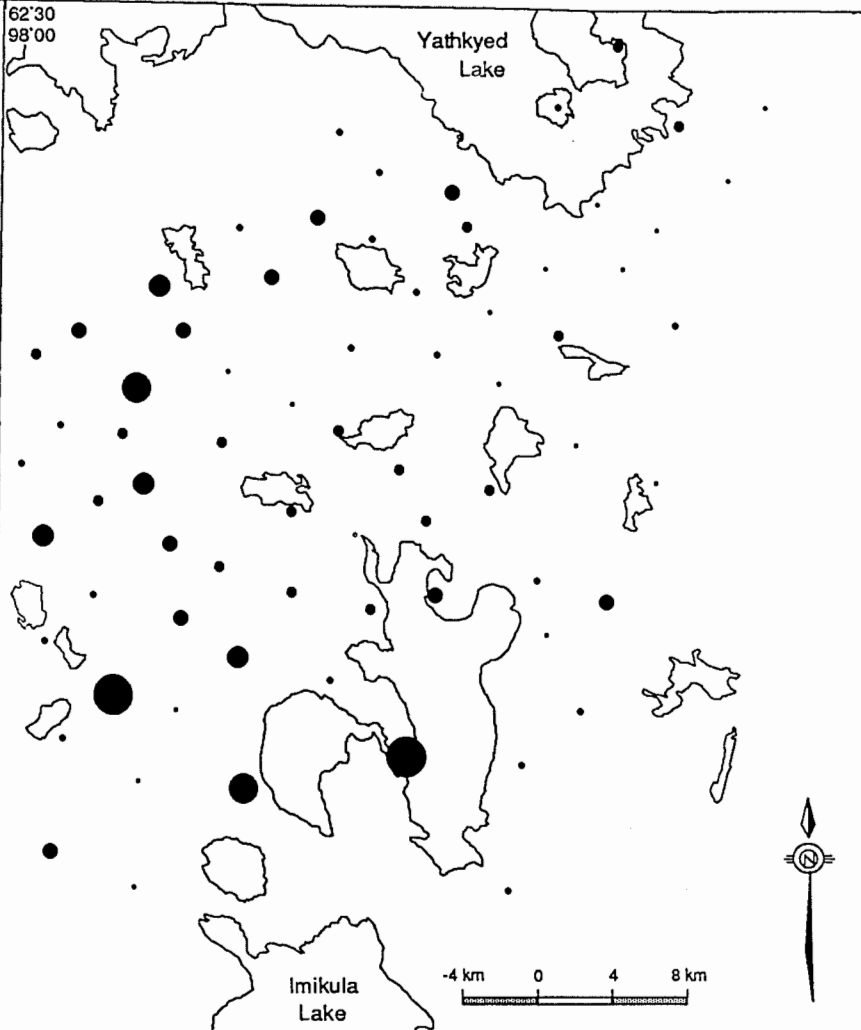
Frequency Histogram



Normal Probability Plot



62°30'
98°00'



Cr				
SIZE	RANGE (ppm)		%TILE	
	LOW	HIGH	OBS.	
•	35	53	18	25.4
••	53	59	19	52.1
•••	59	69	16	74.6
••••	69	78	10	88.7
•••••	78	89	4	94.4
••••••	89	91	2	97.2
•••••••	91	110	2	100

62°00'
97°05'

Compositional Analysis of Till Samples

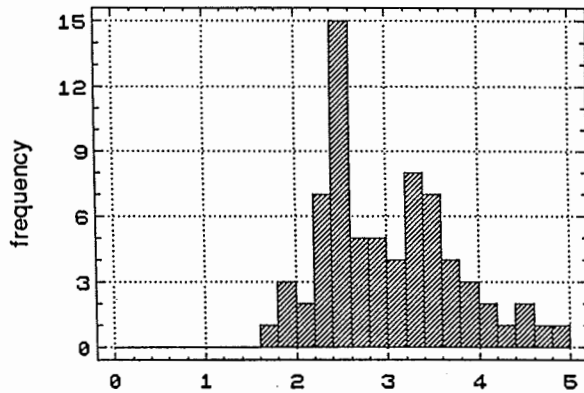
Variable: Cesium (ppm)

Sample preparation method: 230 mesh screen, dry
Analytical preparation method: 10-15g vial

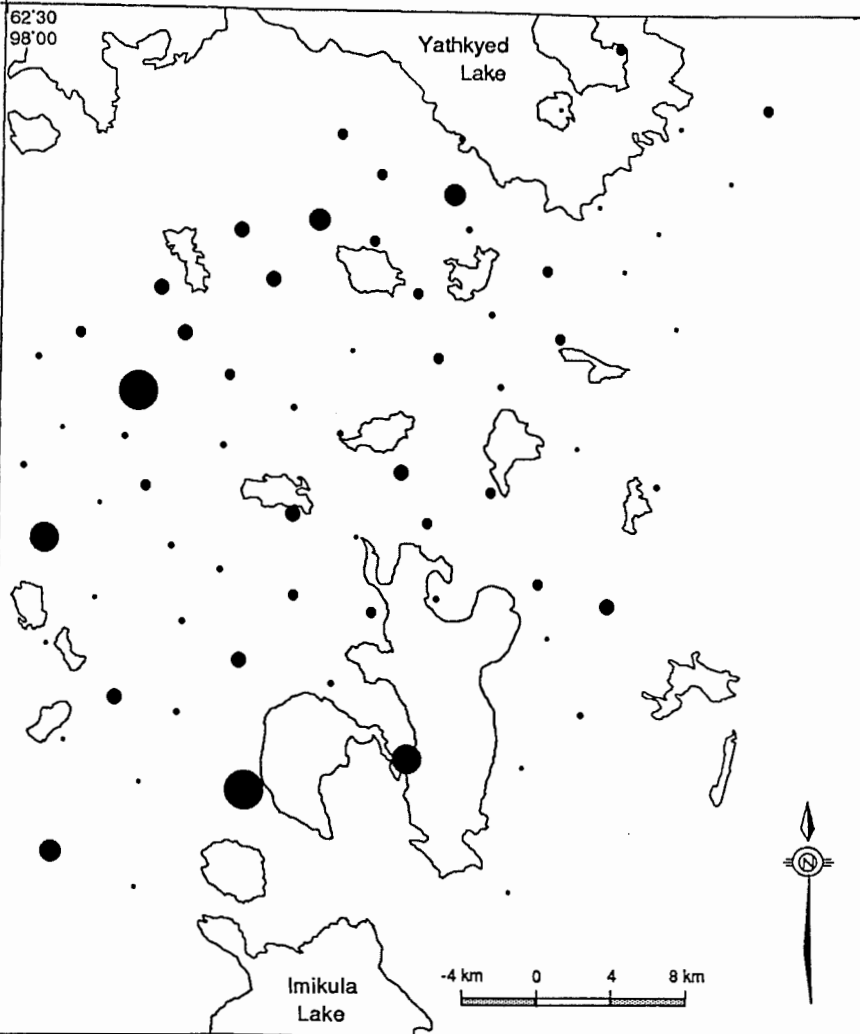
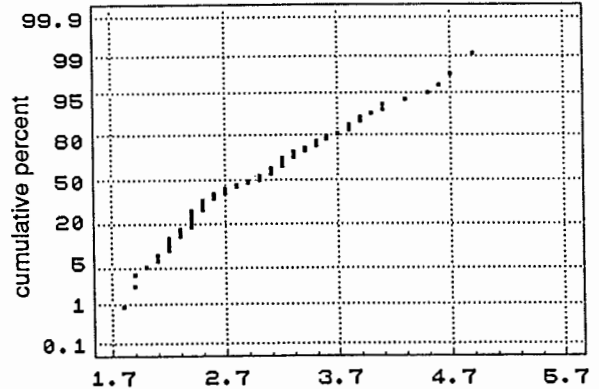
Analytical method: N.A.A.
Detection limit: 0.5 ppm

No. of obs.:	71	Mode:	2.4	Variance:	0.54
Minimum:	1.8	Geometric mean:	2.93	Coefficient of variance:	0.24
Maximum:	4.9	Median:	3	Skewness:	0.57
Mean:	3.01	Standard deviation:	0.74	Kurtosis:	-0.30

Frequency Histogram



Normal Probability Plot



Cs

SIZE	RANGE (ppm)		OBS.	%TILE
	LOW	HIGH		
•	1.79	2.40	20	28.2
•	2.40	3	18	53.5
•	3	3.5	17	77.5
•	3.5	4	9	90.1
•	4	4.30	3	94.4
•	4.30	4.60	2	97.2
•	4.60	4.90	2	100

62°00'
97°05'

Compositional Analysis of Till Samples

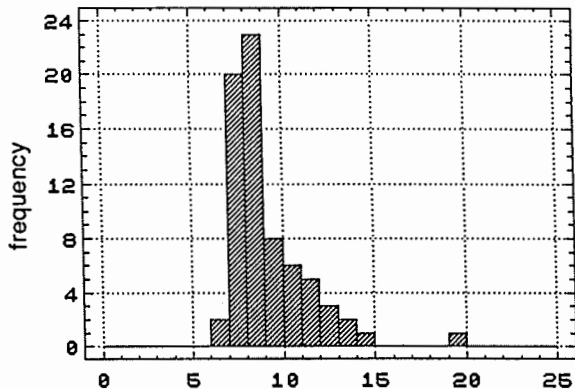
Variable: Hafnium (ppm)

Sample preparation method: 230 mesh screen, dry
Analytical preparation method: 10-15g vial

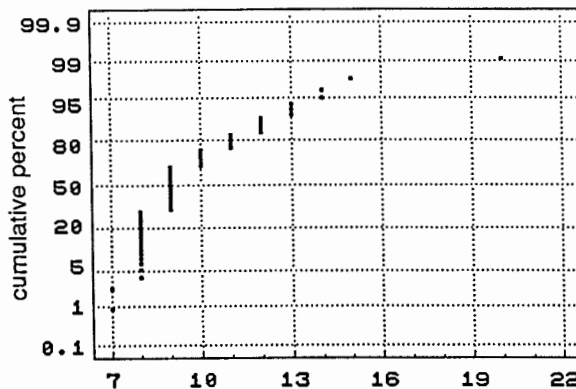
Analytical method: N.A.A.
Detection limit: 1 ppm

No. of obs.:	71	Mode:	9	Variance:	4.64
Minimum:	7	Geometric mean:	9.51	Coefficient of variance:	0.22
Maximum:	20	Median:	9	Skewness:	2.11
Mean:	9.70	Standard deviation:	2.15	Kurtosis:	6.62

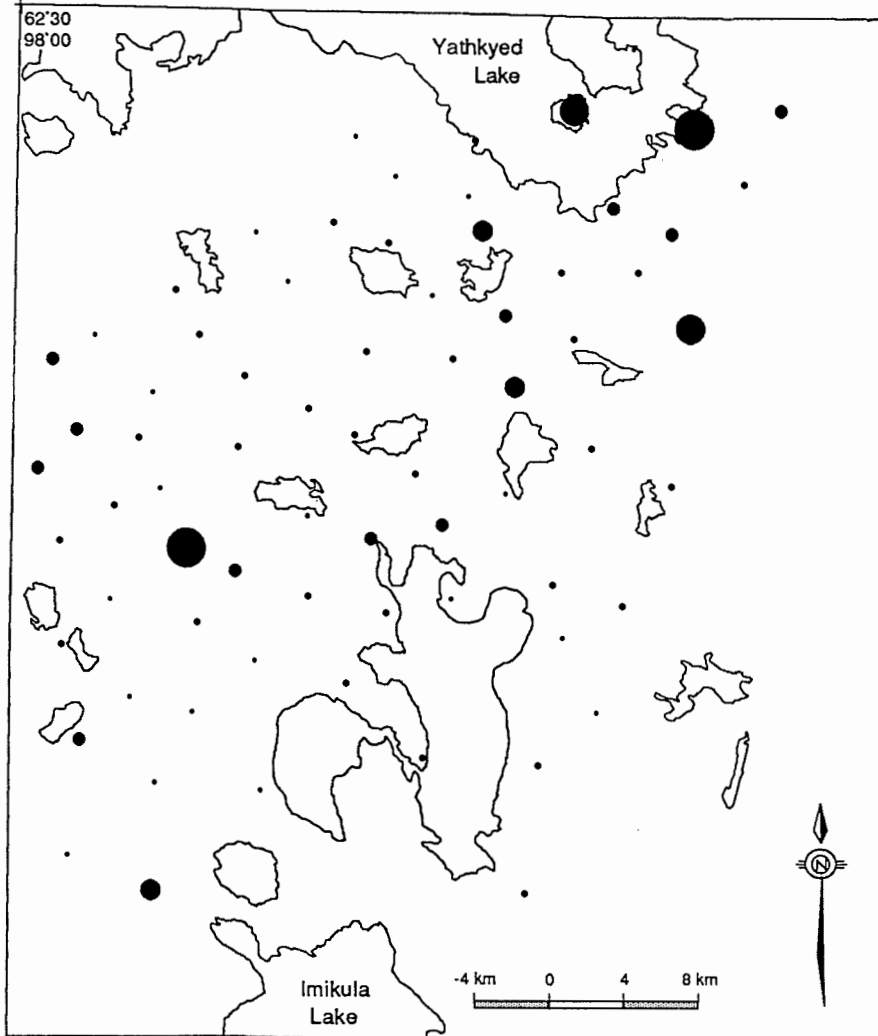
Frequency Histogram



Normal Probability Plot



62°30'
97°00'



Hf			
SIZE	RANGE (ppm)		%TILE
	LOW	HIGH	OBS.
•	7	8	22
•	8	10	31
•	10	12	11
•	12	13	3
•	13	14	2
•	14	20	2

62°00'
97°05'

Compositional Analysis of Till Samples

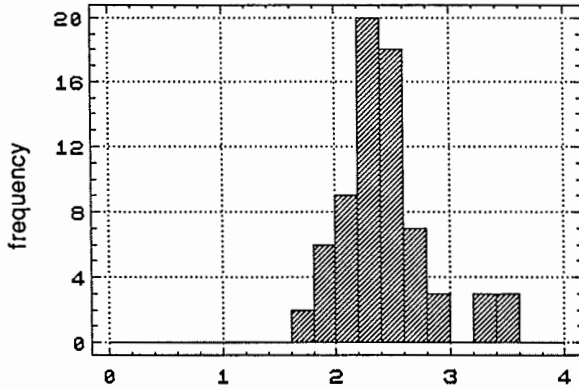
Variable: Iron (%)

Sample preparation method: 230 mesh screen, dry
Analytical preparation method: 10-15g vial

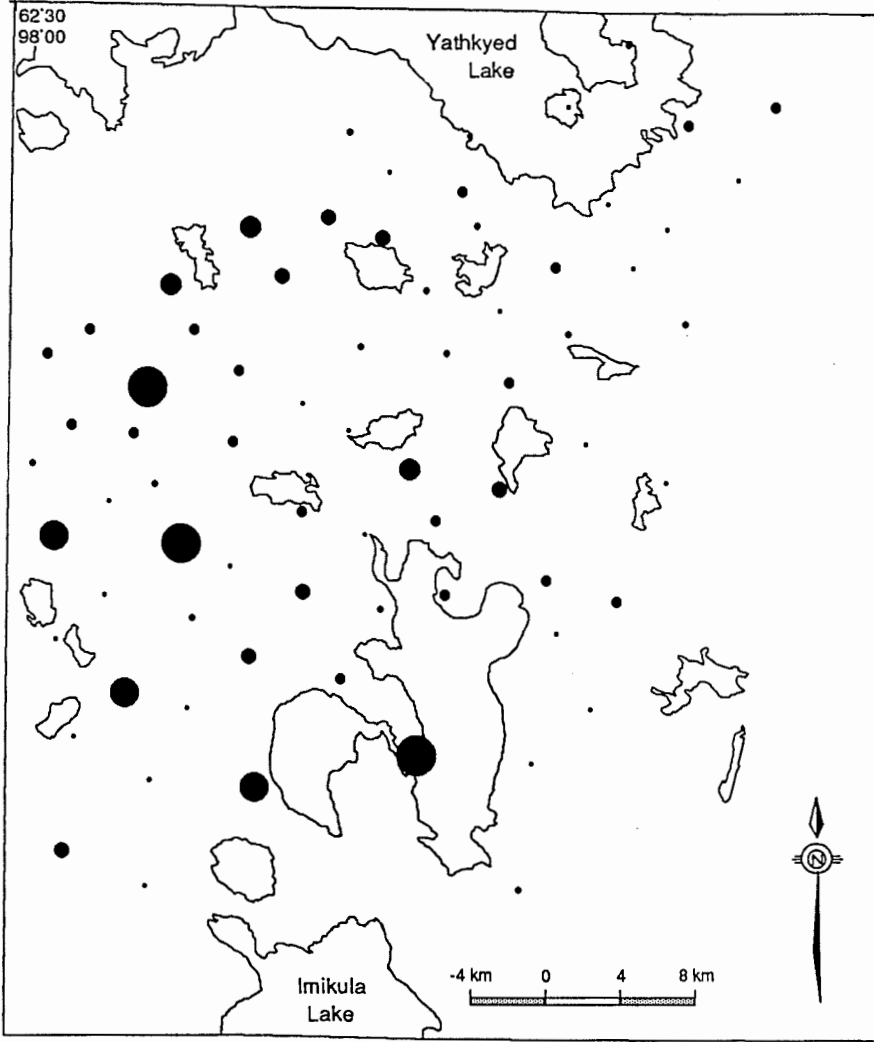
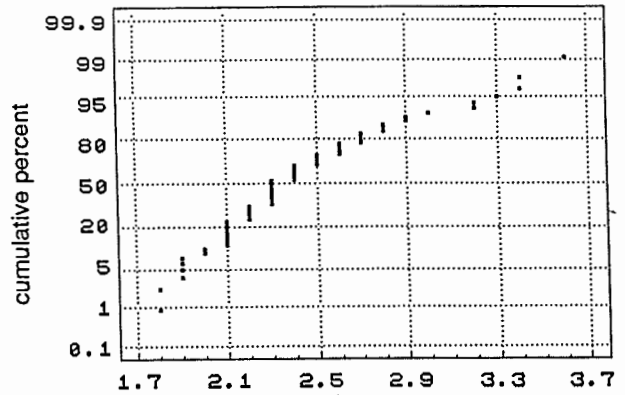
Analytical method: N.A.A.
Detection limit: 0.2 %

No. of obs.:	71	Mode:	2.3	Variance:	0.15
Minimum:	1.8	Geometric mean:	2.40	Coefficient of variance:	0.16
Maximum:	3.6	Median:	2.3	Skewness:	1.01
Mean:	2.43	Standard deviation:	0.40	Kurtosis:	0.94

Frequency Histogram



Normal Probability Plot



Fe				
RANGE (wt. %)				
SIZE	LOW	HIGH	OBS.	%TILE
•	1.79	2.20	24	33.8
•	2.20	2.30	13	52.1
•	2.30	2.60	18	77.5
•	2.60	2.80	7	87.3
•	2.80	3	3	91.5
•	3	3.3	3	95.8
•	3.3	3.60	3	100

62°00'
97°05'

Compositional Analysis of Till Samples

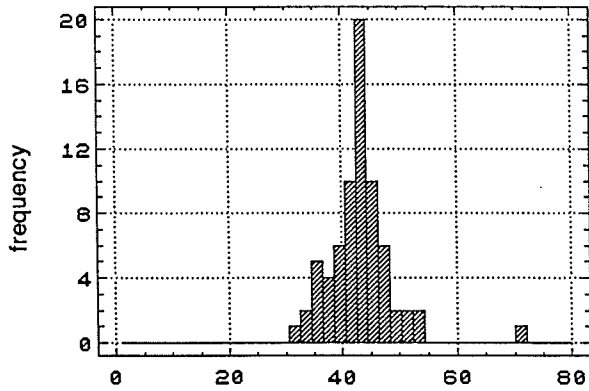
Variable: Lanthanum (ppm)

Sample preparation method: 230 mesh screen, dry
Analytical preparation method: 10-15g vial

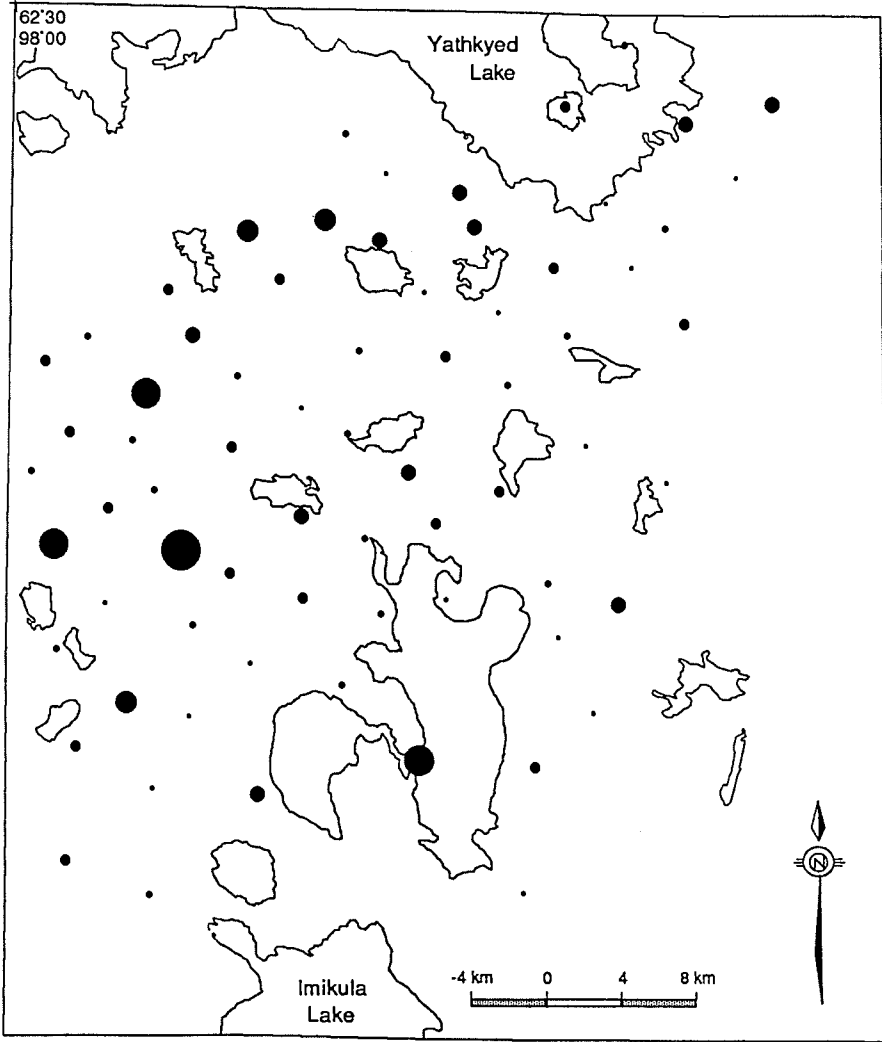
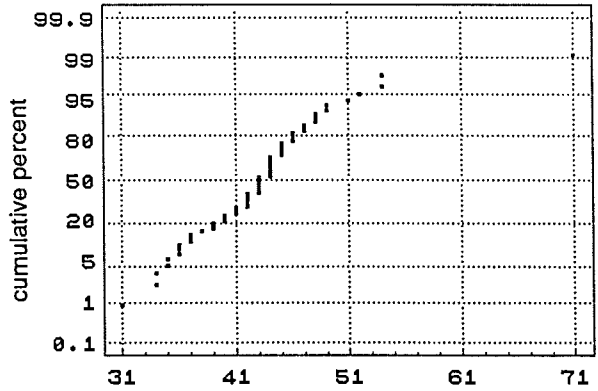
Analytical method: N.A.A.
Detection limit: 2 ppm

No. of obs.:	71	Mode:	44	Variance:	32.01
Minimum:	31	Geometric mean:	42.90	Coefficient of variance:	0.13
Maximum:	71	Median:	43	Skewness:	1.55
Mean:	43.24	Standard deviation:	5.66	Kurtosis:	7.44

Frequency Histogram



Normal Probability Plot



La				
SIZE	RANGE (ppm)		OBS.	%TILE
	LOW	HIGH		
•	31	40	18	25.4
•	40	43	19	52.1
•	43	45	17	76.1
•	45	48	10	90.1
•	48	51	3	94.4
•	51	54	3	98.6
•	54	71	1	100

62°00'
97°05'

Compositional Analysis of Till Samples

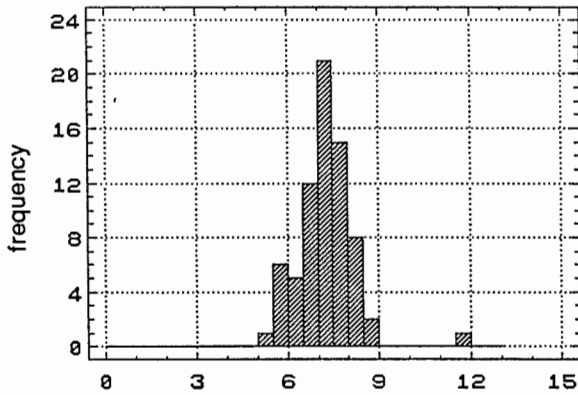
Variable: Samarium (ppm)

Sample preparation method: 230 mesh screen, dry
Analytical preparation method: 10-15g vial

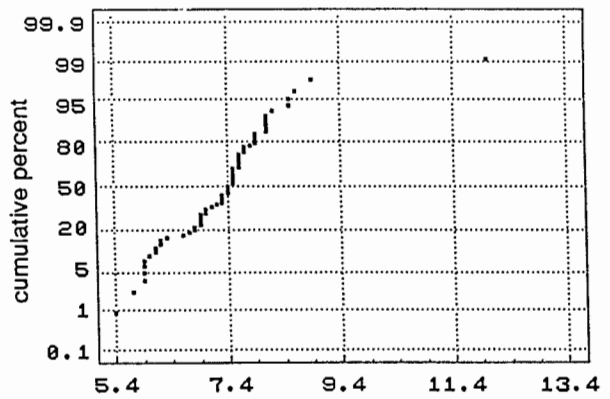
Analytical method: N.A.A.
Detection limit: 0.10 ppm

No. of obs.:	71	Mode:	7.5	Variance:	0.86
Minimum:	5.4	Geometric mean:	7.27	Coefficient of variance:	0.12
Maximum:	12	Median:	7.4	Skewness:	1.47
Mean:	7.33	Standard deviation:	0.93	Kurtosis:	8.04

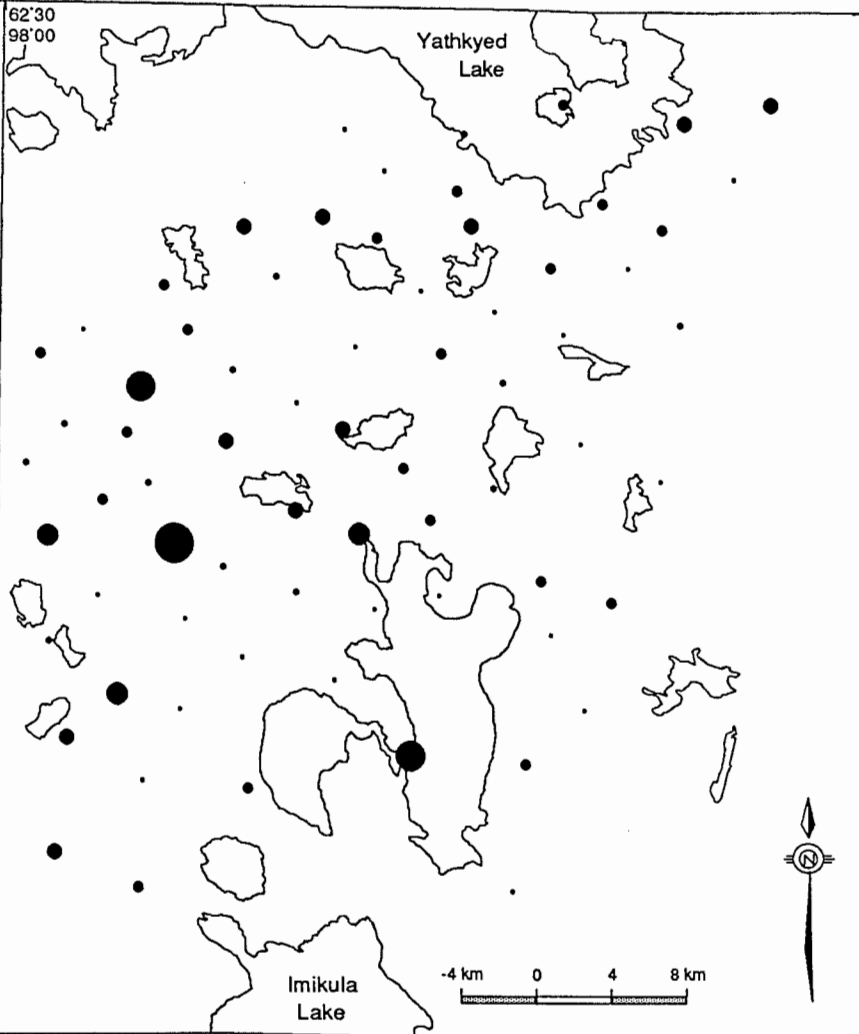
Frequency Histogram



Normal Probability Plot



62°30'
98°00'



Sm				
SIZE	RANGE (ppm)		OBS.	%TILE
	LOW	HIGH		
•	5.4	7	24	33.8
•	7	7.4	12	50.7
•	7.4	7.7	19	77.5
•	7.7	8.1	10	91.5
•	8.1	8.5	3	95.8
•	8.5	8.9	2	98.6
•	8.9	120	1	100

62°00'
97°05'

Compositional Analysis of Till Samples

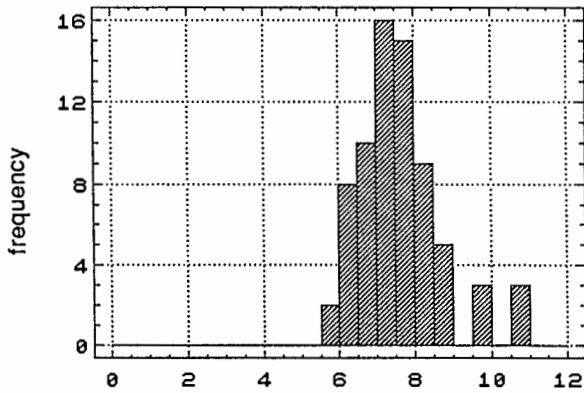
Variable: Scandium (ppm)

Sample preparation method: 230 mesh screen, dry
Analytical preparation method: 10-15g vial

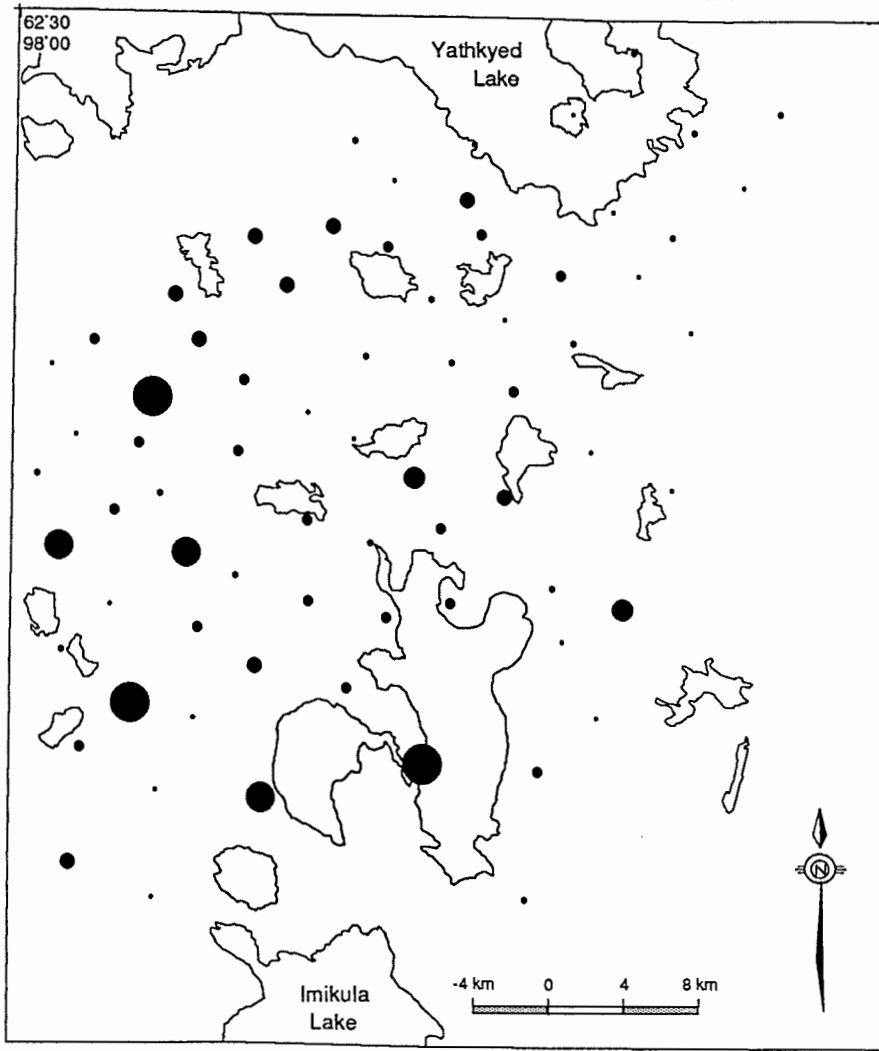
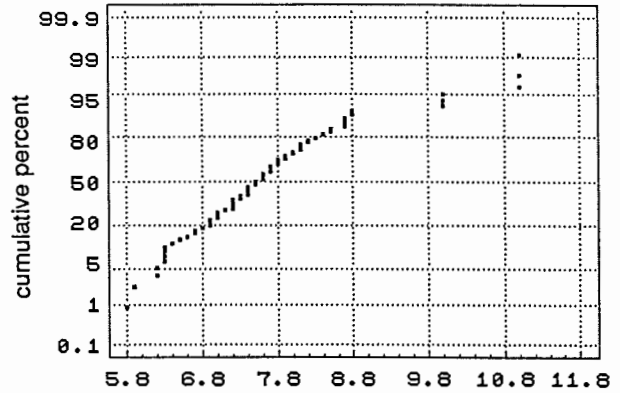
Analytical method: N.A.A.
Detection limit: 0.2 ppm

No. of obs.:	71	Mode:	7.4	Variance:	1.28
Minimum:	5.8	Geometric mean:	7.61	Coefficient of variance:	0.15
Maximum:	11	Median:	7.5	Skewness:	1.17
Mean:	7.68	Standard deviation:	1.13	Kurtosis:	1.77

Frequency Histogram



Normal Probability Plot



Sc				
SIZE	RANGE (ppm)		OBS.	%TILE
	LOW	HIGH		
•	5.80	7	20	28.2
•	7	7.5	16	50.7
•	7.5	8.10	18	76.1
•	8.1	8.7	9	88.7
•	8.7	9	2	91.5
•	9	10	3	95.8
•	10	11	3	100

Compositional Analysis of Till Samples

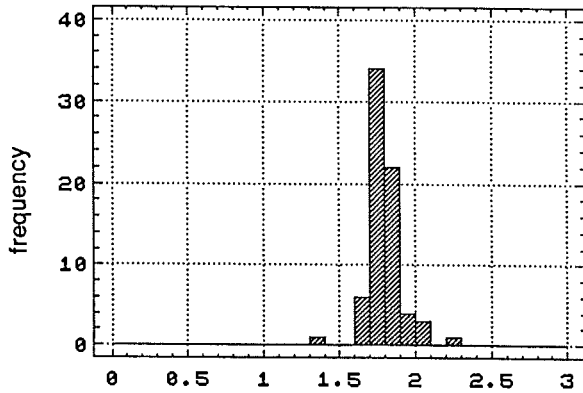
Variable: Sodium (%)

Sample preparation method: 230 mesh screen, dry
Analytical preparation method: 10-15g vial

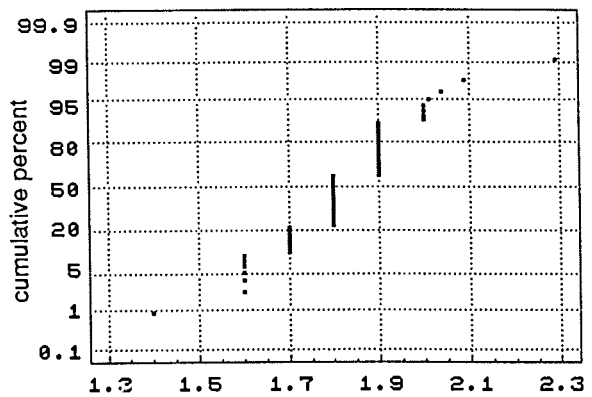
Analytical method: N.A.A.
Detection limit: 0.02 %

No. of obs.:	71	Mode:	1.8	Variance:	0.02
Minimum:	1.4	Geometric mean:	1.82	Coefficient of variance:	0.07
Maximum:	2.29	Median:	1.8	Skewness:	0.03
Mean:	1.82	Standard deviation:	0.13	Kurtosis:	2.19

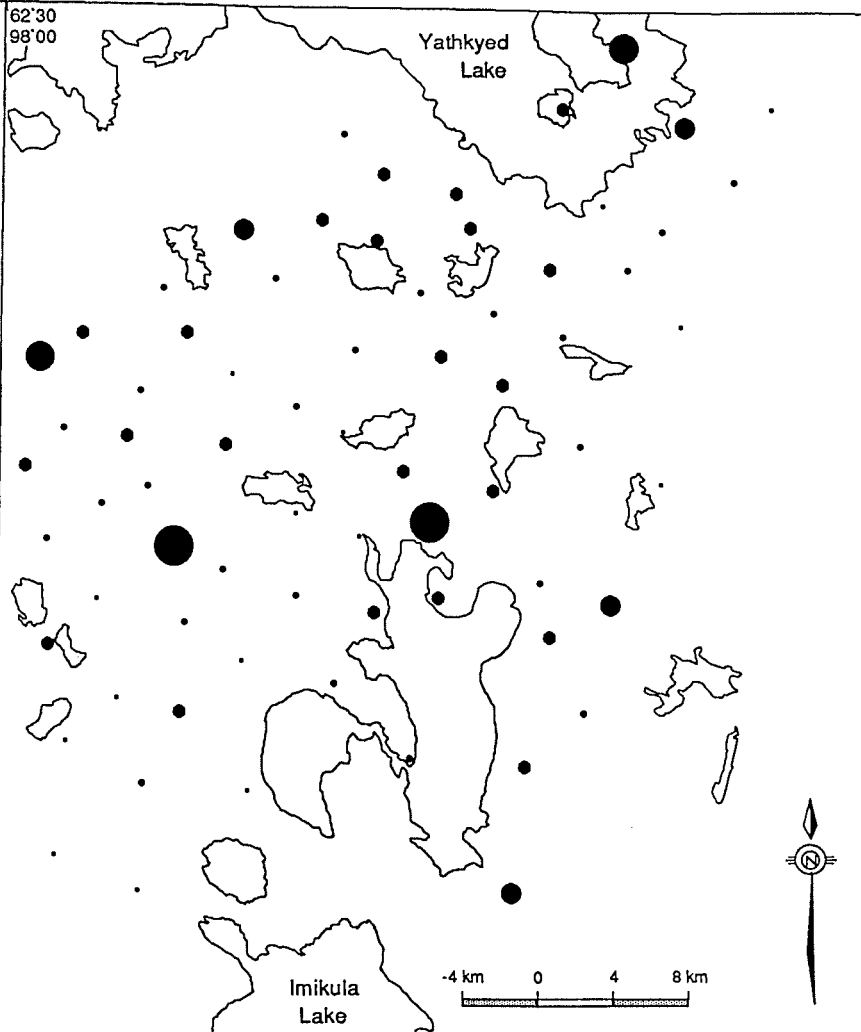
Frequency Histogram



Normal Probability Plot



62°30'
98°00'



Na

SIZE	RANGE (wt. %)		OBS.	%TILE
	LOW	HIGH		
•	1.39	1.7	16	22.5
•	1.7	1.8	25	57.7
•	1.8	1.9	22	88.7
•	1.9	2	4	94.4
•	2	2.04	2	97.2
•	2.04	2.3	2	100

62°00'
97°05'

Compositional Analysis of Till Samples

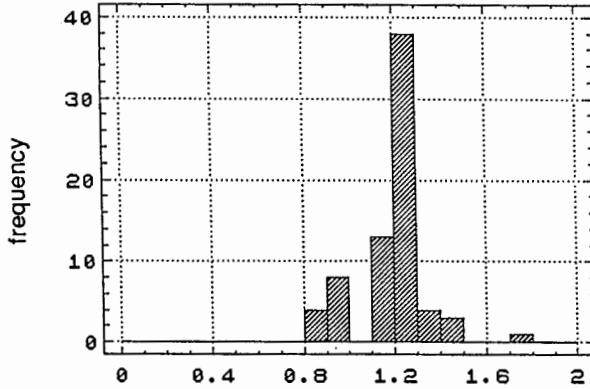
Variable: Tantalum (ppm)

Sample preparation method: 230 mesh screen, dry
Analytical preparation method: 10-15g vial

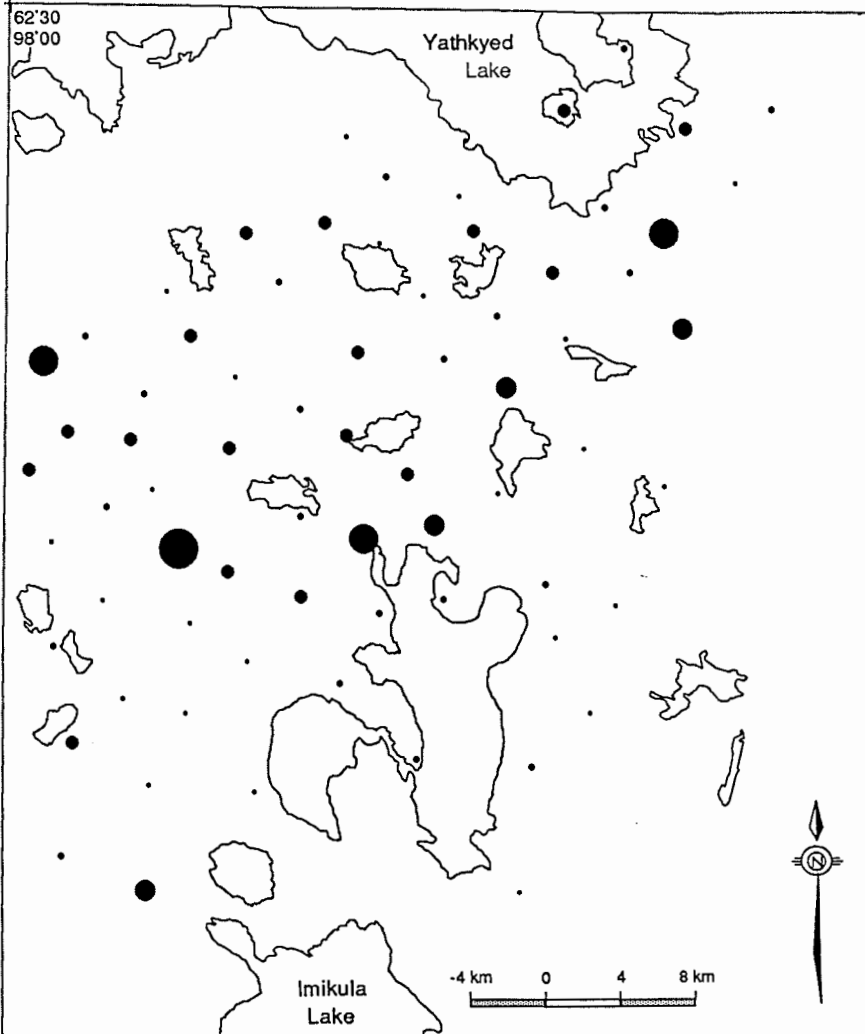
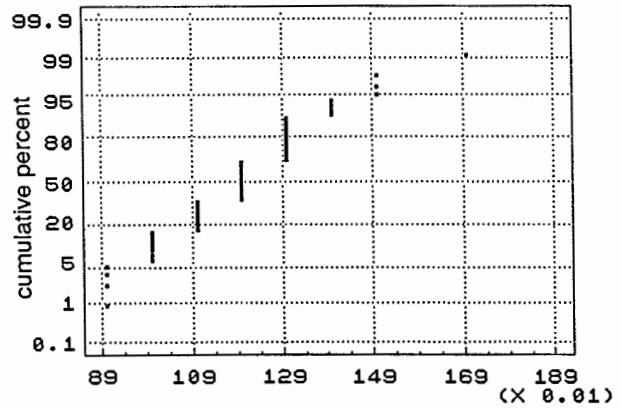
Analytical method: N.A.A.
Detection limit: 0.5 ppm

No. of obs.:	71	Mode:	1.2	Variance:	0.02
Minimum:	0.9	Geometric mean:	1.19	Coefficient of variance:	0.13
Maximum:	1.7	Median:	1.2	Skewness:	0.34
Mean:	1.20	Standard deviation:	0.15	Kurtosis:	0.81

Frequency Histogram



Normal Probability Plot



Ta

SIZE	RANGE (ppm)		OBS.	%TILE
	LOW	HIGH		
•	0.899	1.1	25	35.2
•	1.1	1.2	21	64.8
•	1.2	1.3	17	88.7
•	1.3	1.4	4	94.4
•	1.4	1.5	3	98.6
•	1.5	1.70	1	100

Compositional Analysis of Till Samples

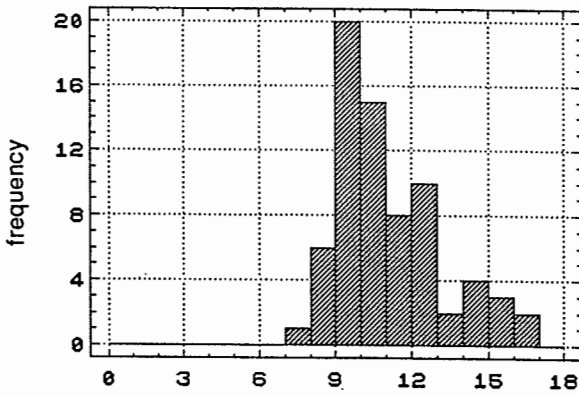
Variable: Thorium (ppm)

Sample preparation method: 230 mesh screen, dry
Analytical preparation method: 10-15g vial

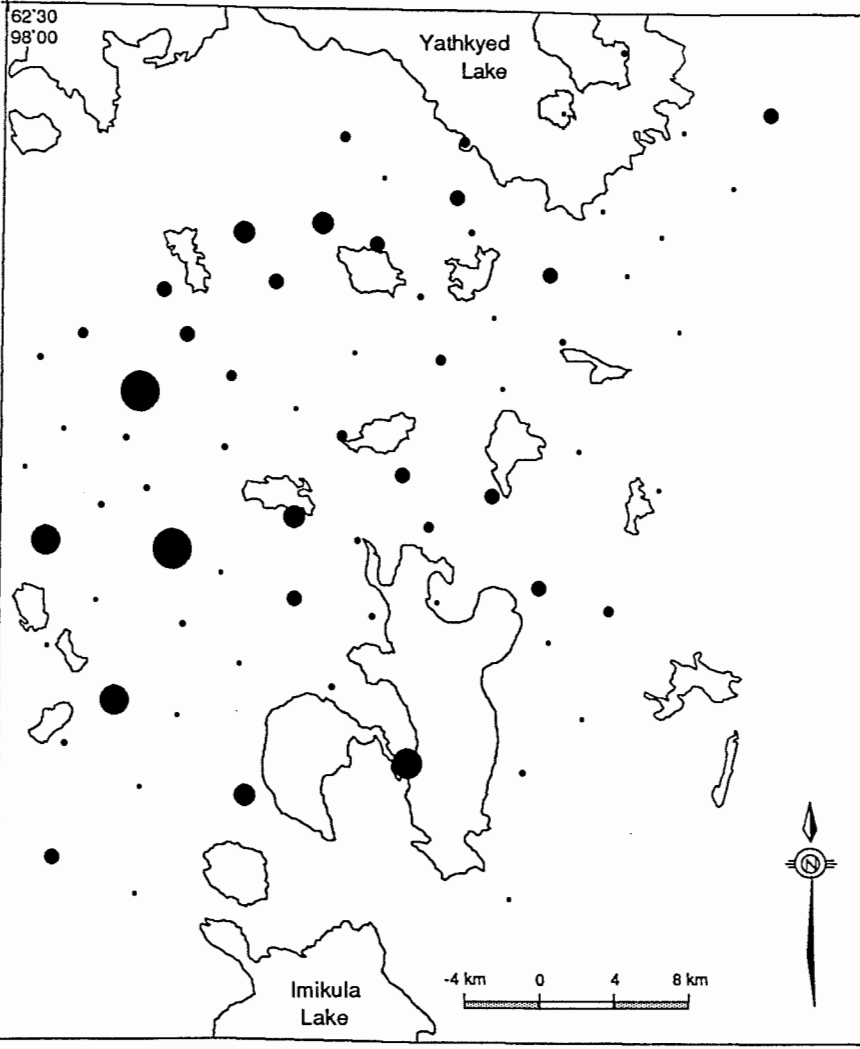
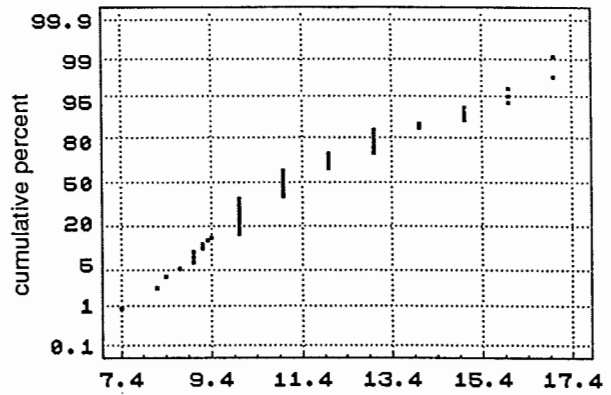
Analytical method: N.A.A.
Detection limit: 0.2 ppm

No. of obs.:	71	Mode:	10	Variance:	4.72
Minimum:	7.4	Geometric mean:	11.33	Coefficient of variance:	0.19
Maximum:	17	Median:	11	Skewness:	0.75
Mean:	11.52	Standard deviation:	2.17	Kurtosis:	0.08

Frequency Histogram



Normal Probability Plot



SIZE	RANGE (ppm)		OBS.	%TILE
	LOW	HIGH		
•	7.4	10	27	38
•	10	11	15	59.2
•	11	12	8	70.4
•	12	14	12	87.3
•	14	15	4	93
•	15	16	3	97.2
•	16	17	2	100

Compositional Analysis of Till Samples

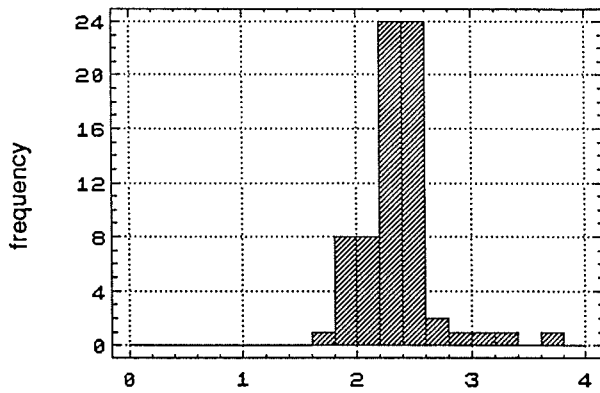
Variable: Uranium (ppm)

Sample preparation method: 230 mesh screen, dry
Analytical preparation method: 10-15g vial

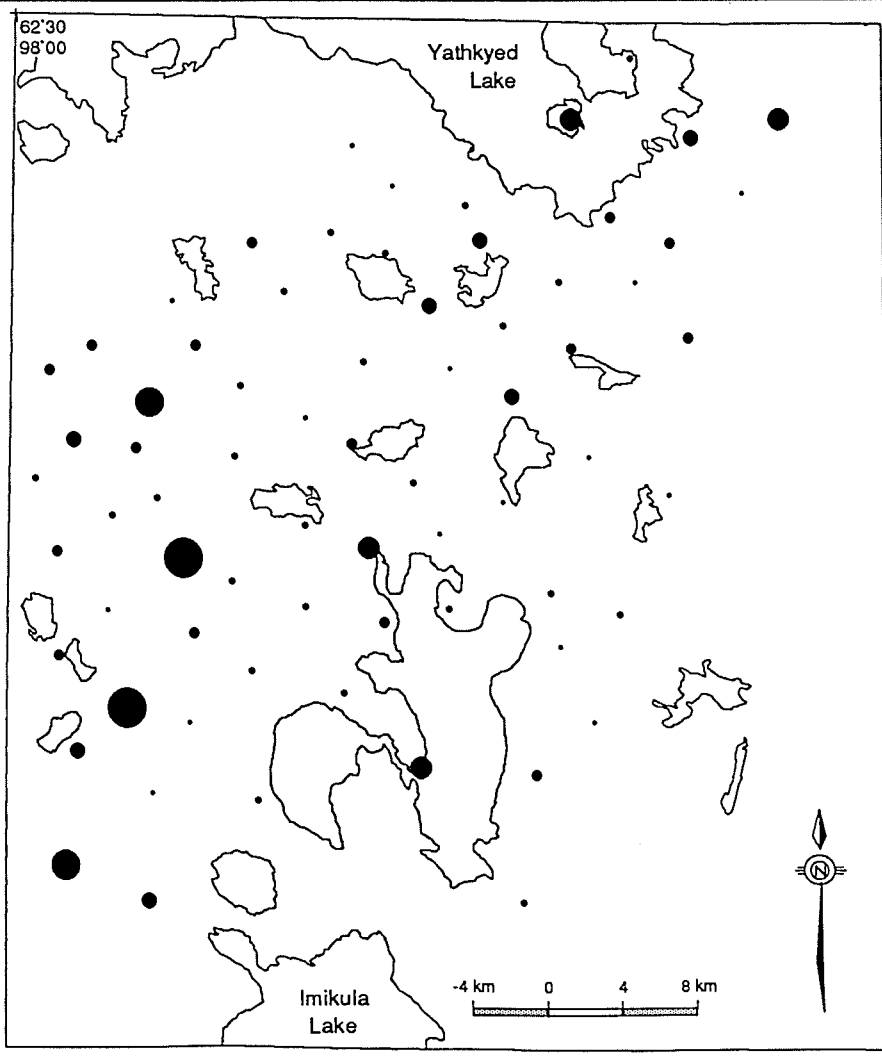
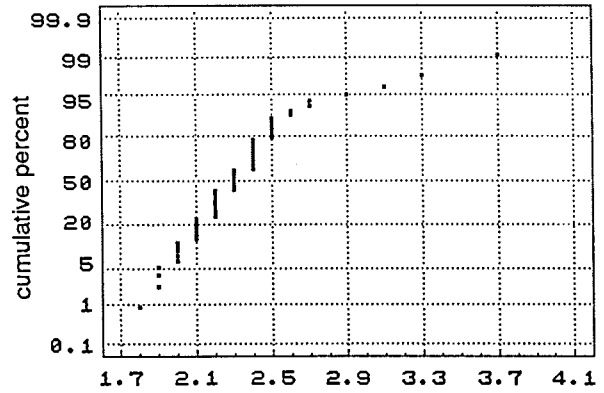
Analytical method: N.A.A.
Detection limit: 0.2 ppm

No. of obs.:	71	Mode:	2.4	Variance:	0.09
Minimum:	1.8	Geometric mean:	2.31	Coefficient of variance:	0.13
Maximum:	3.7	Median:	2.3	Skewness:	1.91
Mean:	2.33	Standard deviation:	0.30	Kurtosis:	6.38

Frequency Histogram



Normal Probability Plot



U

SIZE	RANGE (ppm)		OBS.	%TILE
	LOW	HIGH		
•	1.79	2.1	17	23.9
•	2.1	2.3	24	57.7
•	2.3	2.4	15	78.9
•	2.4	2.5	7	88.7
•	2.5	2.70	4	94.4
•	2.70	3.1	2	97.2
•	3.1	3.7	2	100

Compositional Analysis of Till Samples

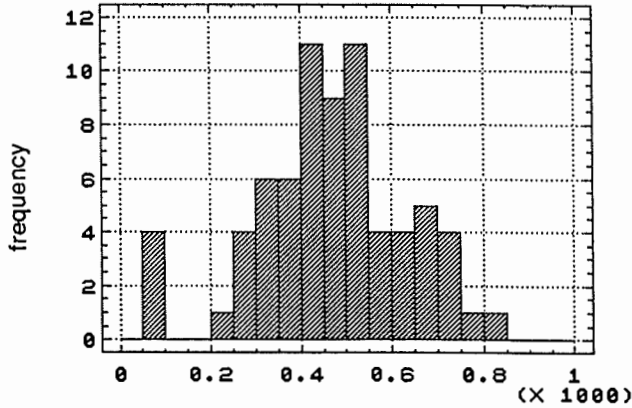
Variable: Zirconium (ppm)

Sample preparation method: 230 mesh screen, dry
Analytical preparation method: 10-15g vial

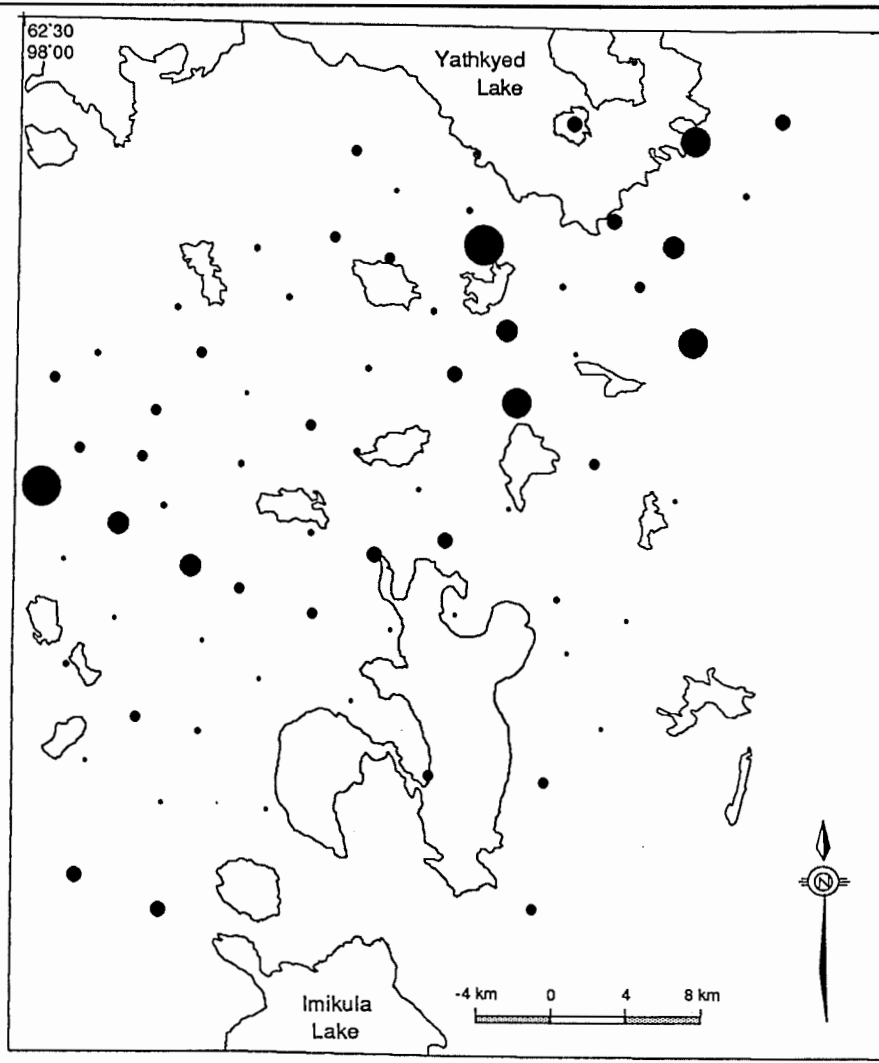
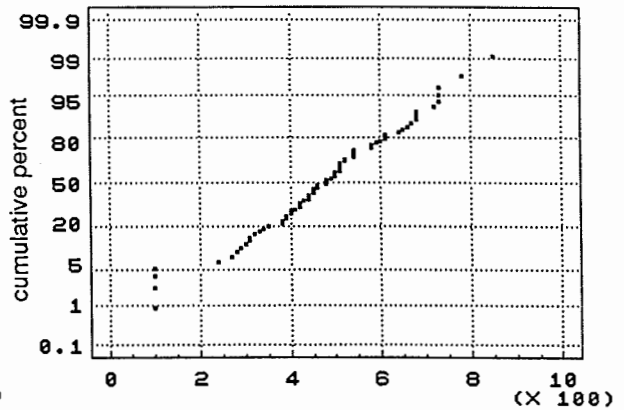
Analytical method: N.A.A.
Detection limit: 200 ppm

No. of obs.:	71	Mode:	510	Variance:	26036.8
Minimum:	100	Geometric mean:	438.29	Coefficient of variance:	0.34
Maximum:	850	Median:	480	Skewness:	-0.24
Mean:	474.93	Standard deviation:	161.36	Kurtosis:	0.23

Frequency Histogram



Normal Probability Plot



SIZE	Zr RANGE (ppm)		OBS.	%TILE
	LOW	HIGH		
•	100	390	19	26.8
•	390	480	18	52.1
•	480	580	17	76.1
•	580	670	8	87.3
•	670	720	4	93
•	720	730	3	97.2
•	730	850	2	100