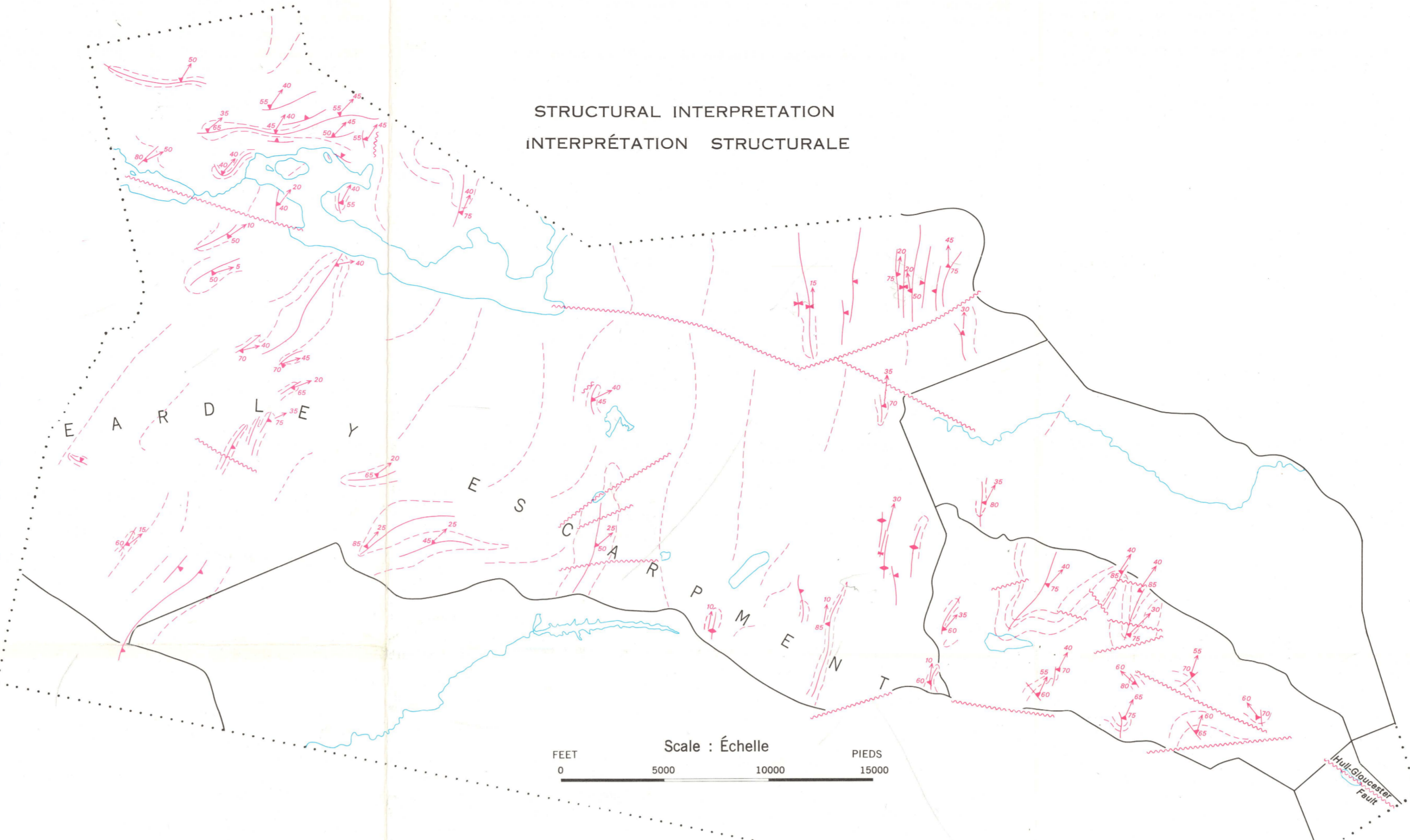


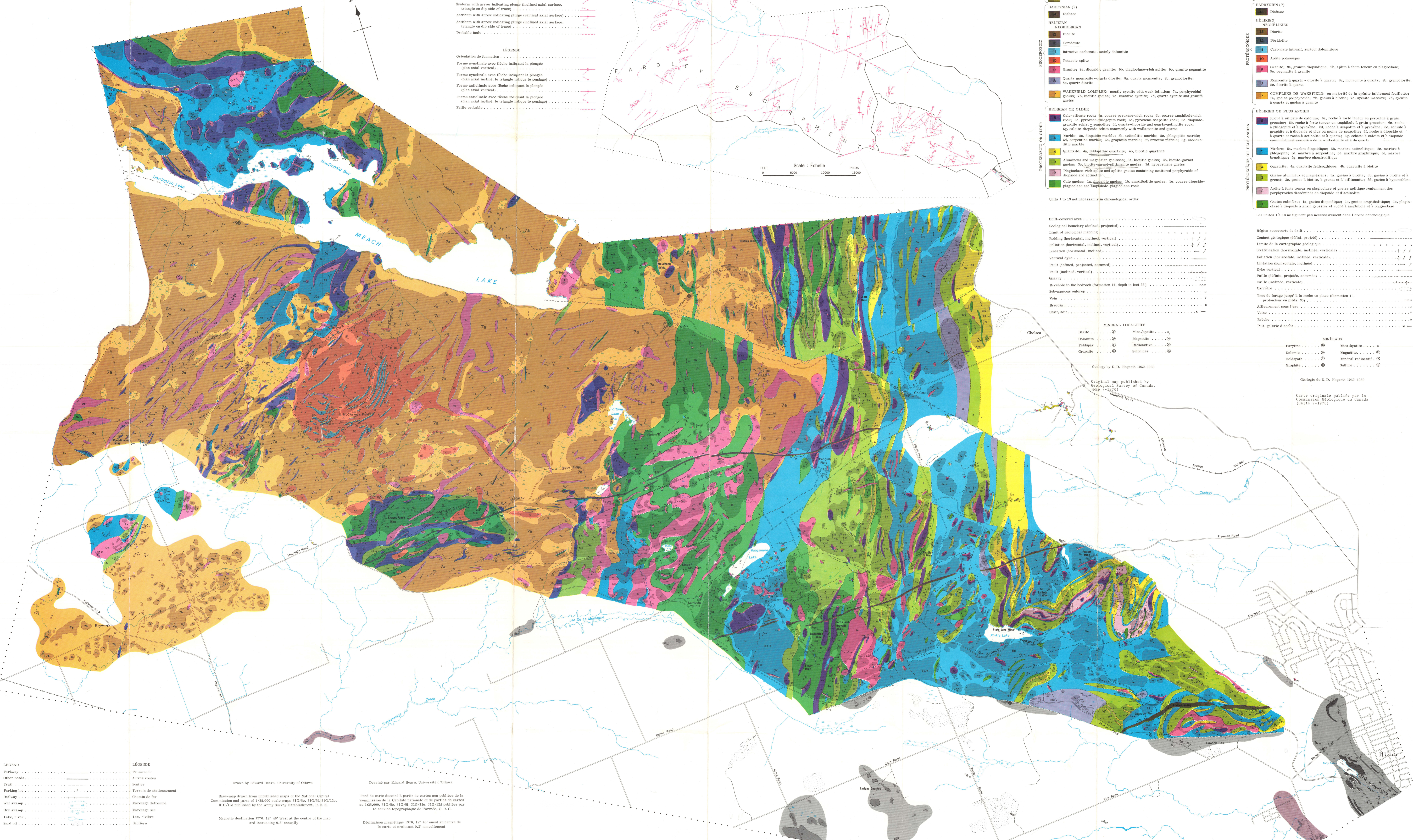
STRUCTURAL INTERPRETATION  
INTERPRÉTATION STRUCTURALE



- LEGEND**
- Trend of formation
  - Synform with arrow indicating plunge (vertical axial surface)
  - Synform with arrow indicating plunge (inclined axial surface, triangle on the side of trend)
  - Antiform with arrow indicating plunge (vertical axial surface)
  - Antiform with arrow indicating plunge (inclined axial surface, triangle on the side of trend)
  - Probable fault

- LÉGENDE**
- Orientation de formation
  - Forme synclinale avec flèche indiquant la plongée (plan axial vertical)
  - Forme synclinale avec flèche indiquant la plongée (plan axial incliné, le triangle indique le plongée)
  - Forme anticlinale avec flèche indiquant la plongée (plan axial vertical)
  - Forme anticlinale avec flèche indiquant la plongée (plan axial incliné, le triangle indique le plongée)
  - Faülte probable

- LEGEND**
- PALEOZOIC**
- ORDOVICIAN  
MIDDLE ORDOVICIAN  
OTTAWA FORMATION: limestone
  - LOWER ORDOVICIAN  
ROCKCLIFFE FORMATION: siltstone and shale
  - LOWER ORDOVICIAN OR CAMBRIAN  
NEPEAN FORMATION: sandstone
  - HARBINIAN (?)  
Dolomite
  - HELKIAN  
NEOHELKIAN  
Diorite  
Péridotite  
Intrusive carbonate, mainly dolomite
  - Granite; 7a, diopside granite; 7b, plagioclase-rich granite; 7c, granite pegmatite; 7d, diorite à quartz
  - Quartzite monzonite-quartz diorite; 8a, quartz monzonite; 8b, granulite; 8c, quartz diorite
  - WAKEFIELD COMPLEX: mostly syenite with weak foliation; 7a, perthyrrothol quartz; 7b, biotite gneiss; 7c, massive syenite; 7d, quartz syenite and granite gneiss
  - HELKIAN OR OLDER  
Calc-silicate rock; 4a, coarse gneiss; 4b, coarse amphibole-rich rock; 4c, gneiss; 4d, gneiss; 4e, gneiss; 4f, gneiss; 4g, gneiss; 4h, gneiss; 4i, gneiss; 4j, gneiss; 4k, gneiss; 4l, gneiss; 4m, gneiss; 4n, gneiss; 4o, gneiss; 4p, gneiss; 4q, gneiss; 4r, gneiss; 4s, gneiss; 4t, gneiss; 4u, gneiss; 4v, gneiss; 4w, gneiss; 4x, gneiss; 4y, gneiss; 4z, gneiss
- PROTEROZOIC**
- Quartzite; 4a, foliolitic quartzite; 4b, biotite quartzite
  - Aluminous and magnesian gneisses; 5a, biotite gneiss; 5b, biotite-garnet gneiss; 5c, biotite-garnet-sillimanite gneiss; 5d, hypersthene gneiss; 5e, hypersthene-rich gneiss; 5f, actinolite gneiss; 5g, actinolite gneiss; 5h, actinolite gneiss; 5i, actinolite gneiss; 5j, actinolite gneiss; 5k, actinolite gneiss; 5l, actinolite gneiss; 5m, actinolite gneiss; 5n, actinolite gneiss; 5o, actinolite gneiss; 5p, actinolite gneiss; 5q, actinolite gneiss; 5r, actinolite gneiss; 5s, actinolite gneiss; 5t, actinolite gneiss; 5u, actinolite gneiss; 5v, actinolite gneiss; 5w, actinolite gneiss; 5x, actinolite gneiss; 5y, actinolite gneiss; 5z, actinolite gneiss
  - Calc gneiss; 1a, diopside gneiss; 1b, amphibolite gneiss; 1c, coarse diopside-plagioclase and amphibole-plagioclase rock
- HELKIAN OR PLEIN ANCIEN**
- Rock to silicate of calcite; 4a, rock to silicate of calcite; 4b, rock to silicate of calcite; 4c, rock to silicate of calcite; 4d, rock to silicate of calcite; 4e, rock to silicate of calcite; 4f, rock to silicate of calcite; 4g, rock to silicate of calcite; 4h, rock to silicate of calcite; 4i, rock to silicate of calcite; 4j, rock to silicate of calcite; 4k, rock to silicate of calcite; 4l, rock to silicate of calcite; 4m, rock to silicate of calcite; 4n, rock to silicate of calcite; 4o, rock to silicate of calcite; 4p, rock to silicate of calcite; 4q, rock to silicate of calcite; 4r, rock to silicate of calcite; 4s, rock to silicate of calcite; 4t, rock to silicate of calcite; 4u, rock to silicate of calcite; 4v, rock to silicate of calcite; 4w, rock to silicate of calcite; 4x, rock to silicate of calcite; 4y, rock to silicate of calcite; 4z, rock to silicate of calcite
  - Marble; 5a, marble; 5b, marble; 5c, marble; 5d, marble; 5e, marble; 5f, marble; 5g, marble; 5h, marble; 5i, marble; 5j, marble; 5k, marble; 5l, marble; 5m, marble; 5n, marble; 5o, marble; 5p, marble; 5q, marble; 5r, marble; 5s, marble; 5t, marble; 5u, marble; 5v, marble; 5w, marble; 5x, marble; 5y, marble; 5z, marble
  - Quartzite; 4a, quartzite; 4b, quartzite; 4c, quartzite; 4d, quartzite; 4e, quartzite; 4f, quartzite; 4g, quartzite; 4h, quartzite; 4i, quartzite; 4j, quartzite; 4k, quartzite; 4l, quartzite; 4m, quartzite; 4n, quartzite; 4o, quartzite; 4p, quartzite; 4q, quartzite; 4r, quartzite; 4s, quartzite; 4t, quartzite; 4u, quartzite; 4v, quartzite; 4w, quartzite; 4x, quartzite; 4y, quartzite; 4z, quartzite
  - Gneiss aluminous and magnesian; 5a, gneiss; 5b, gneiss; 5c, gneiss; 5d, gneiss; 5e, gneiss; 5f, gneiss; 5g, gneiss; 5h, gneiss; 5i, gneiss; 5j, gneiss; 5k, gneiss; 5l, gneiss; 5m, gneiss; 5n, gneiss; 5o, gneiss; 5p, gneiss; 5q, gneiss; 5r, gneiss; 5s, gneiss; 5t, gneiss; 5u, gneiss; 5v, gneiss; 5w, gneiss; 5x, gneiss; 5y, gneiss; 5z, gneiss
  - Apelite to forte teneur en plagioclase et gneiss aplite; 1a, apelite; 1b, apelite; 1c, apelite; 1d, apelite; 1e, apelite; 1f, apelite; 1g, apelite; 1h, apelite; 1i, apelite; 1j, apelite; 1k, apelite; 1l, apelite; 1m, apelite; 1n, apelite; 1o, apelite; 1p, apelite; 1q, apelite; 1r, apelite; 1s, apelite; 1t, apelite; 1u, apelite; 1v, apelite; 1w, apelite; 1x, apelite; 1y, apelite; 1z, apelite
  - Gneiss calcifère; 1a, gneiss; 1b, gneiss; 1c, gneiss; 1d, gneiss; 1e, gneiss; 1f, gneiss; 1g, gneiss; 1h, gneiss; 1i, gneiss; 1j, gneiss; 1k, gneiss; 1l, gneiss; 1m, gneiss; 1n, gneiss; 1o, gneiss; 1p, gneiss; 1q, gneiss; 1r, gneiss; 1s, gneiss; 1t, gneiss; 1u, gneiss; 1v, gneiss; 1w, gneiss; 1x, gneiss; 1y, gneiss; 1z, gneiss
- MINERAL LOCALITIES**
- Baryte
  - Dolomite
  - Feldspar
  - Graphite
  - Mica/Apélite
  - Magnetite
  - Radioactive
  - Sulphur
- MINÉRAUX**
- Baryte
  - Dolomite
  - Feldspath
  - Graphite
  - Mica/Apélite
  - Magnetite
  - Minéral radioactif
  - Sulfure
- Units 1 to 13 not necessarily in chronological order

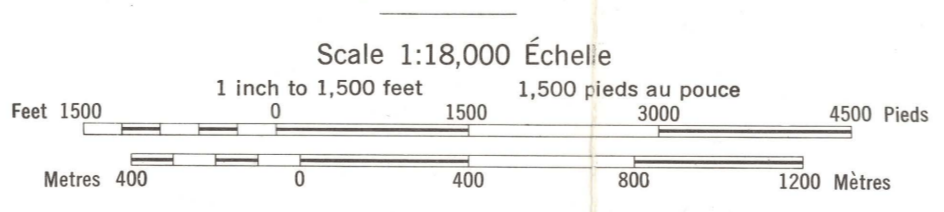


- LEGEND**
- Highway
  - Other roads
  - Trail
  - Right-of-way
  - Wet swamp
  - Dry swamp
  - Lake, river
  - Sand spit

- LÉGENDE**
- Autre route
  - Sentier
  - Terrain de stationnement
  - Chemins de fer
  - Mirage asséché
  - Mirage sec
  - Lac, rivière
  - Bâche
- Drawn by Edward Hours, University of Ottawa
- Base-map drawn from unpublished maps of the National Capital Commission and parts of 1:75,000 scale maps 310/5c, 310/5d, 310/5e, 310/5f published by the Army Survey Establishment, R.C.C.
- Magnetic declination 1975, 12° 46' West at the centre of the map and increasing 0.3" annually

- Desiné par Edward Hours, Université d'Ottawa
- Fond de carte dessiné à partir de cartes non publiées de la Commission de la Capitale nationale et de parties de cartes au 1:75,000, 310/5c, 310/5d, 310/5e, 310/5f publiées par le Service topographique de l'Armée, G.R.C.
- Déclinaison magnétique 1975, 12° 46' ouest au centre de la carte et croissant 0,3" annuellement

GEOLOGY-GÉOLOGIE  
GATINEAU PARK - PARC DE LA GATINEAU  
(south part and surrounding area - partie sud et région environnante)  
QUÉBEC



Corrigenda. Greys for the solid outcrops of the Ottawa Formation (17) in the two areas above are too dark and too light respectively.

Corrigenda. Les gris pour les affleurements de la formation d'Ottawa des deux régions ci-dessus sont trop foncés et trop pâles respectivement.