

Canada
Department of Mines

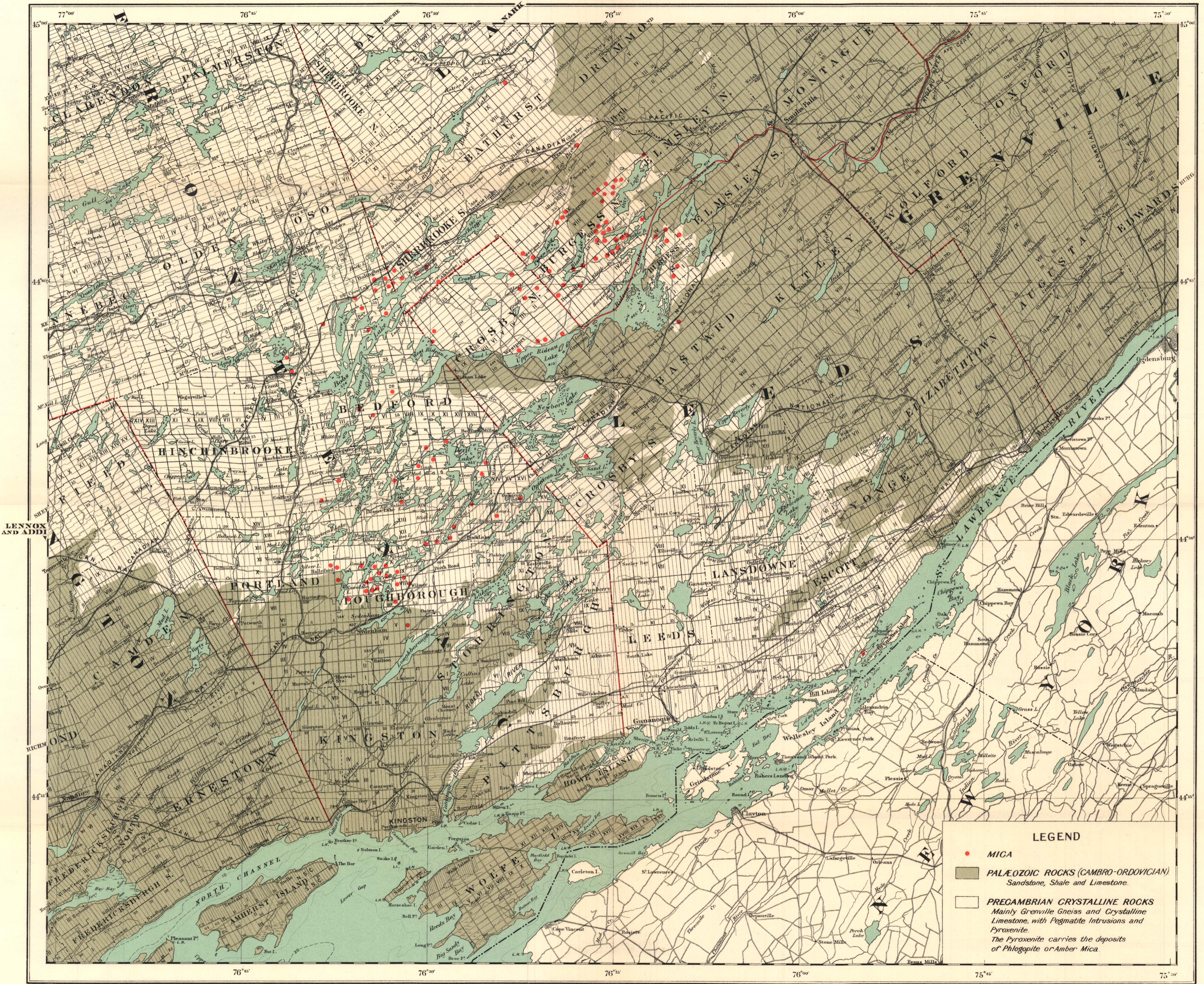
HON. CHARLES STEWART, MINISTER; CHARLES CAMSELL, DEPUTY MINISTER.

MINES BRANCH

JOHN McLEISH, Director

1929

Joins Sheet No. 703



LENNOX AND ADDI

RICHMOND

H. E. Baine, Chief Draughtsman.

Base Map from Chief Geographer's office
Department of the Interior.

MAP
SHOWING LOCATION
OF THE
PRINCIPAL AMBER MICA MINES AND OCCURRENCES
IN THE
PROVINCE OF ONTARIO

Scale - 250,000 or 3.95 Miles to 1 Inch
0 1 2 3 4 5 6 7 8 9 10

LEGEND

- MICA
- PALÆOZOIC ROCKS (CAMBRO-ORDOVICIAN)
Sandstone, Shale and Limestone.
- PRECAMBRIAN CRYSTALLINE ROCKS
Mainly Grenville Gneiss and Crystalline
Limestone, with Pegmatite Intrusions and
Pyroxenite.
The Pyroxenite carries the deposits of
Phlogopite or Amber Mica.

To accompany report No. 701 on Mica
by Hugh S. Spence, 1929.
Geology compiled by Hugh S. Spence
from notes by R. W. Ellis.