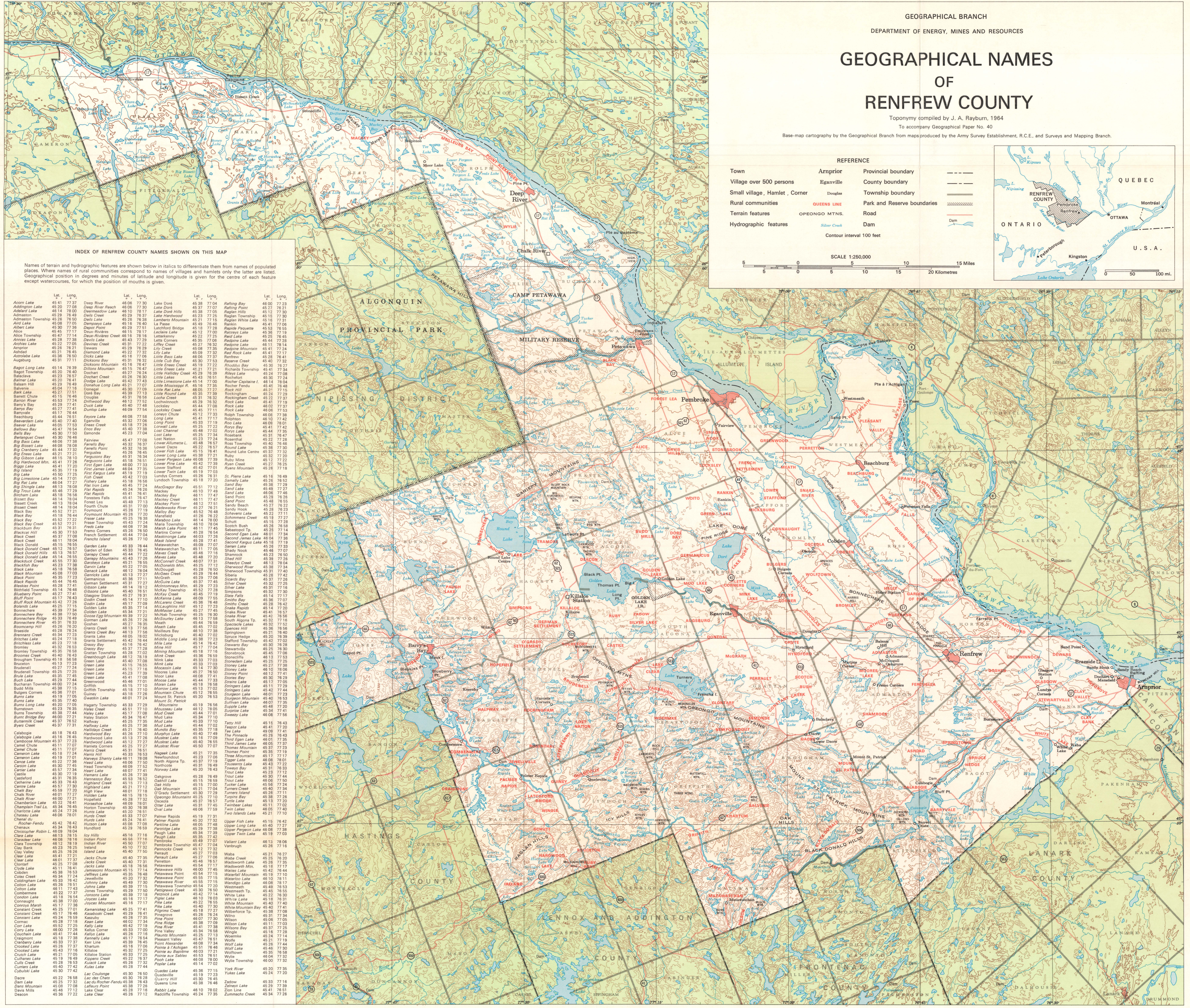


GEOGRAPHICAL NAMES OF RENFREW COUNTY

Toponymy compiled by J. A. Rayburn, 1964
To accompany Geographical Paper No. 40

Base-map cartography by the Geographical Branch from maps produced by the Army Survey Establishment, R.C.E., and Surveys and Mapping Branch.



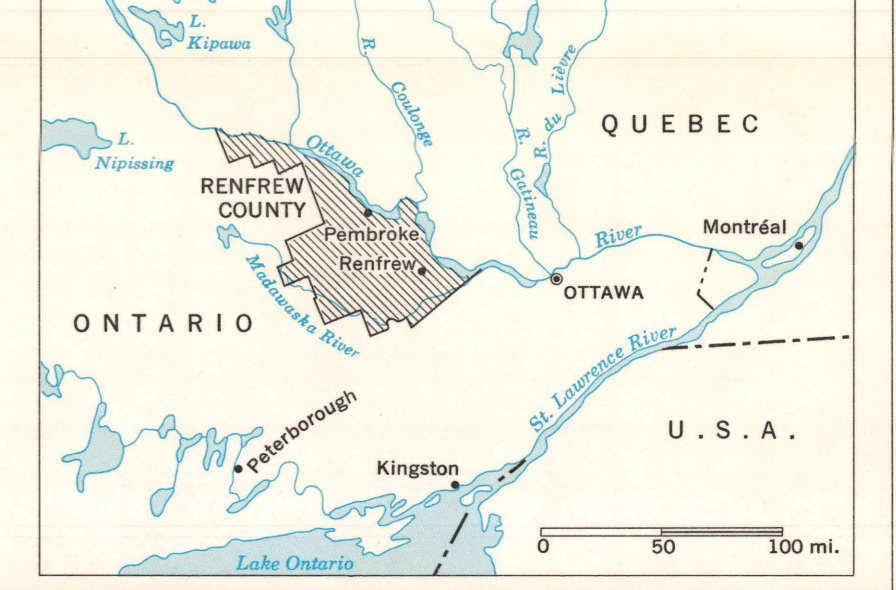
REFERENCE

Town	Arrprior	Provincial boundary	---
Village over 500 persons	Eganville	County boundary	- - - -
Small village, Hamlet, Corner	Douglas	Township boundary	—————
Rural communities	QUEENS LINE	Park and Reserve boundaries	
Terrain features	OPEONGO MTS.	Road	—————
Hydrographic features	Silver Creek	Dam	———

Contour interval 100 feet

SCALE 1:250,000

6 0 5 10 15 20 Kilometres
1 0 5 10 Miles



INDEX OF RENFREW COUNTY NAMES SHOWN ON THIS MAP

Names of terrain and hydrographic features are shown below in italics to differentiate them from names of populated places. Where names of rural communities correspond to names of villages and hamlets only the latter are listed. Geographical position in degrees and minutes of latitude and longitude is given for the centre of each feature except watercourses, for which the position of mouths is given.

Lat.	Long.	Lat.	Long.	Lat.	Long.	Lat.	Long.
45 41 77 37		46 06 77 30		45 38 77 04		45 07 77 23	
45 40 77 08	Deep River Reach	46 06 77 30	Lake Donk	45 37 77 07	Deep River	45 07 77 23	
45 41 78 00	Desnoyers Lake	45 10 78 17	Lake Donk	45 36 77 39	Deep River	45 07 77 23	
45 29 76 49	Deils Creek	45 29 76 37	Lake Hartwood	45 23 77 25	Deep River	45 07 77 23	
45 26 76 38	Dels Lake	45 28 76 38	Lambert Mountain	45 23 77 25	Deep River	45 07 77 23	
45 08 77 05	Dempsey Lake	45 16 76 40	Lake	45 08 77 23	Deep River	45 07 77 23	
45 30 77 38	Despot Point	45 29 77 51	Latchford Bridge	45 18 77 28	Deep River	45 07 77 23	
45 26 76 58	Deux-Rivieres Creek	45 15 77 17	Leckey Lake	45 12 77 40	Deep River	45 07 77 23	
45 27 77 05	Devines Creek	45 31 77 22	Lillys Creek	45 27 78 32	Deep River	45 07 77 23	
45 28 76 21	Dewees	45 21 78 29	Lillys Creek	45 28 78 38	Deep River	45 07 77 23	
45 21 76 45	Diamond Lake	45 22 77 32	Lillys Lake	45 27 78 32	Deep River	45 07 77 23	
45 38 76 50	Dike Lake	45 16 77 28	Little Bass Lake	45 28 76 41	Deep River	45 07 77 23	
45 31 77 11	Dicksons Bay	45 16 76 32	Little Bass Lake	45 28 76 41	Deep River	45 07 77 23	
		45 16 76 47	Little Ennes Lake	45 30 76 27	Deep River	45 07 77 23	
		45 27 76 24	Little Ennes Lake	45 31 77 21	Deep River	45 07 77 23	
		45 28 76 30	Little Halliday Creek	45 29 76 39	Deep River	45 07 77 23	
		45 42 77 43	Little Limestone Lake	45 14 77 00	Deep River	45 07 77 23	
		45 30 77 07	Little Massarong Lake	45 18 77 35	Deep River	45 07 77 23	
		45 30 77 09	Little Massarong Lake	45 18 77 35	Deep River	45 07 77 23	
		45 31 76 56	Little Round Lake	45 27 78 32	Deep River	45 07 77 23	
		45 12 77 52	Lochmoch	45 29 76 39	Deep River	45 07 77 23	
		45 09 77 54	Lochmoch	45 31 77 32	Deep River	45 07 77 23	
		45 08 77 58	Lochmoch	45 31 77 32	Deep River	45 07 77 23	
		45 08 77 58	Lochmoch	45 31 77 32	Deep River	45 07 77 23	
		45 08 77 58	Lochmoch	45 31 77 32	Deep River	45 07 77 23	
		45 08 77 58	Lochmoch	45 31 77 32	Deep River	45 07 77 23	
		45 08 77 58	Lochmoch	45 31 77 32	Deep River	45 07 77 23	
		45 08 77 58	Lochmoch	45 31 77 32	Deep River	45 07 77 23	
		45 08 77 58	Lochmoch	45 31 77 32	Deep River	45 07 77 23	
		45 08 77 58	Lochmoch	45 31 77 32	Deep River	45 07 77 23	
		45 08 77 58	Lochmoch	45 31 77 32	Deep River	45 07 77 23	
		45 08 77 58	Lochmoch	45 31 77 32	Deep River	45 07 77 23	