



- PALEOZOIC**
ORDOVICIAN
 5 Black River Group } Limestone
 5a Trenton Group
- UNCONFORMITY**
- PRECAMBRIAN**
 4 Granite
 4a Syenite
 4b Diorite and gabbro
- INTRUSIVE CONTACT**
 3 Undifferentiated marbles and lime silicate rocks
- 2 Pelitic rocks, argillite, greywacke, schist, conglomerate
- 1 1. Mafic and intermediate } Metavolcanics
 1a, Saic

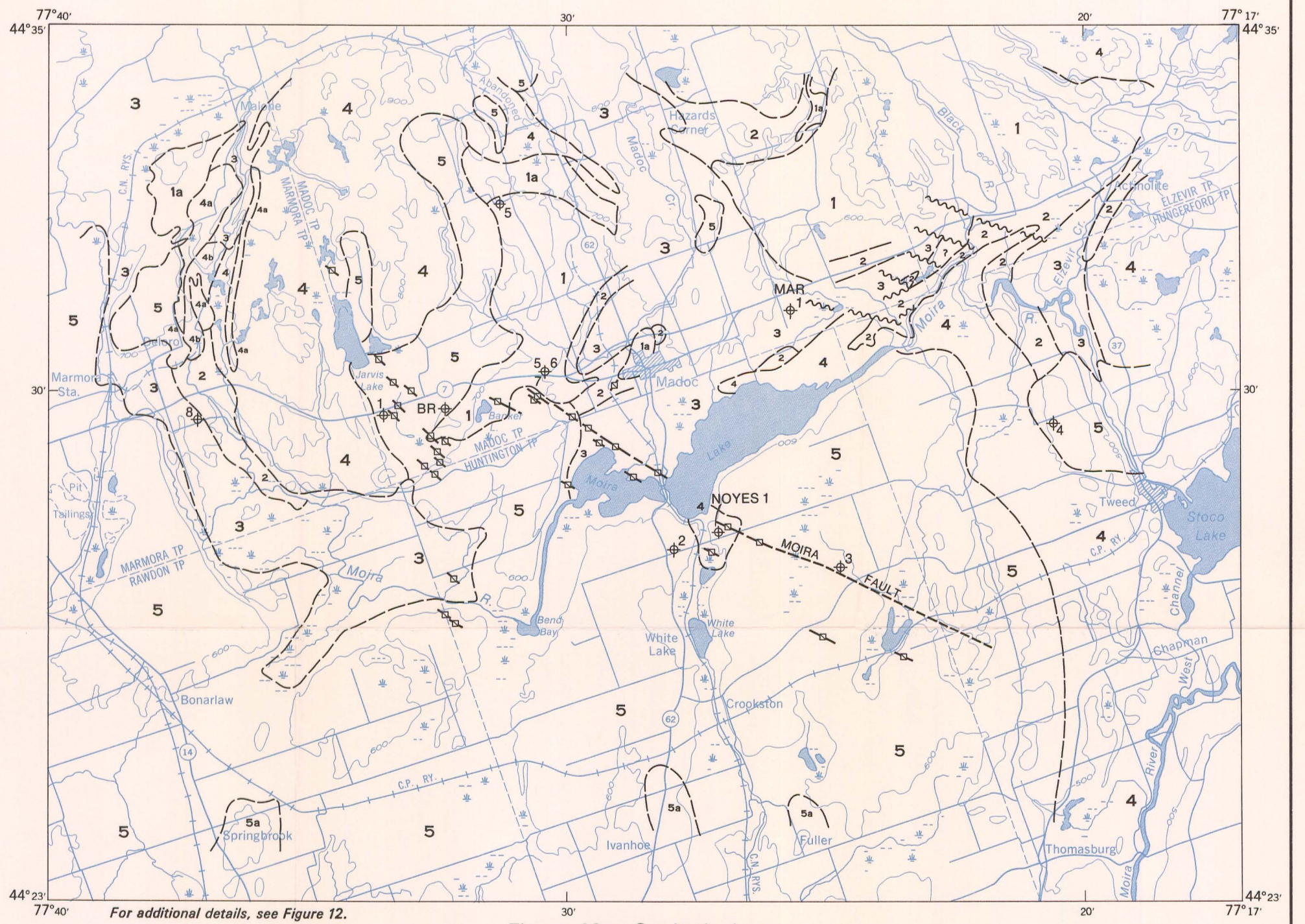
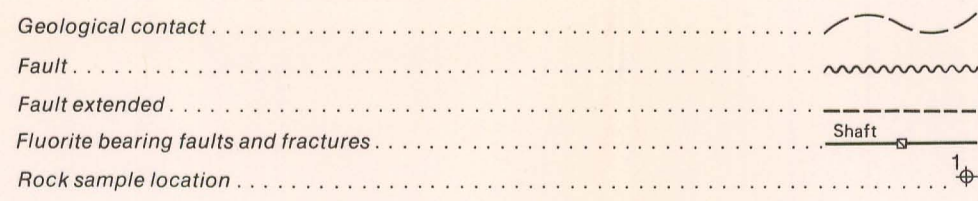


Figure 20a. Geological map.

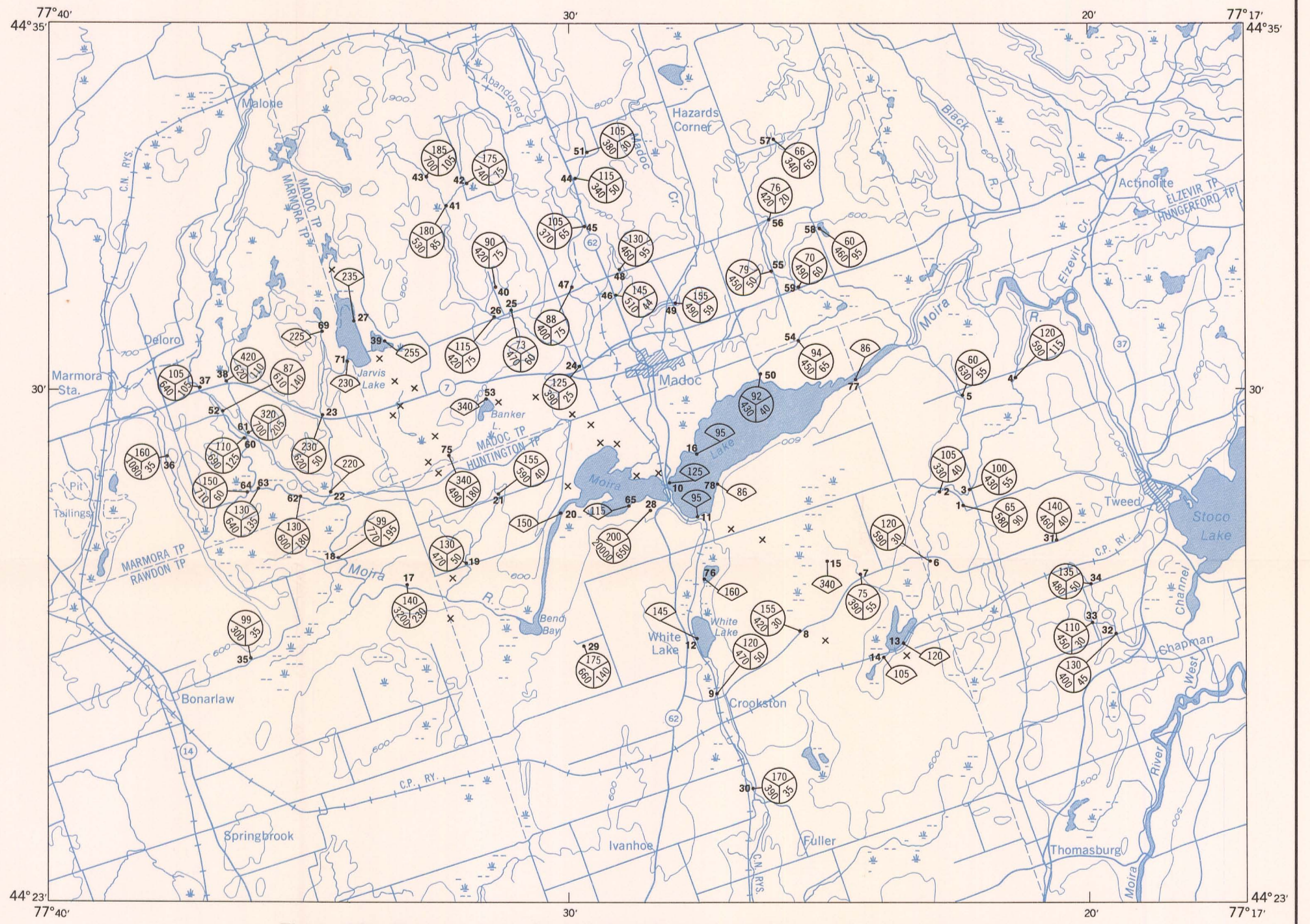
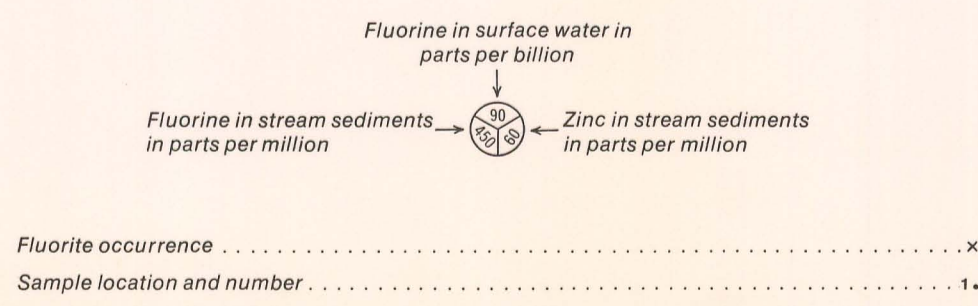


Figure 20b. Fluorine in surface waters, fluorine and zinc in stream sediments.

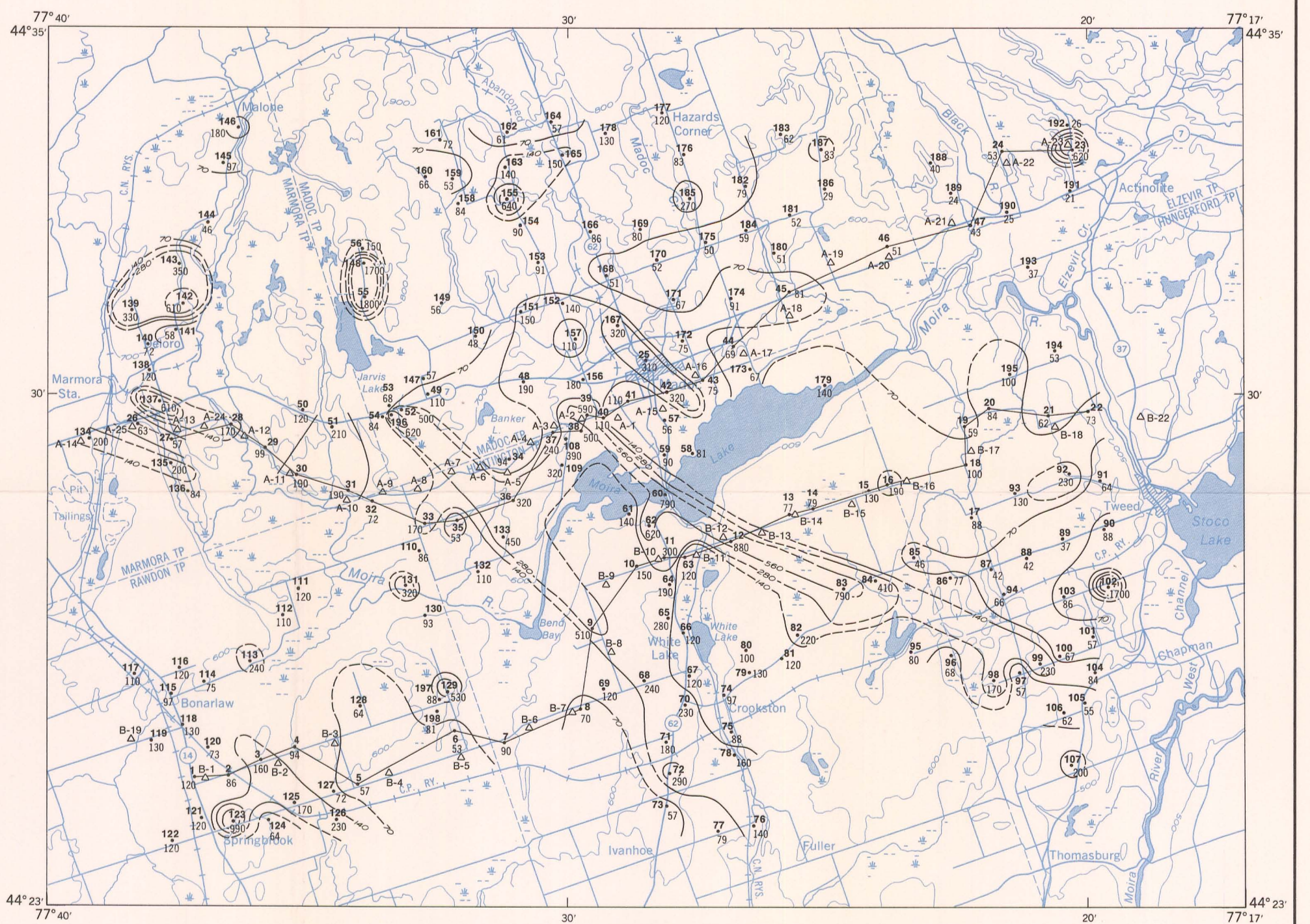
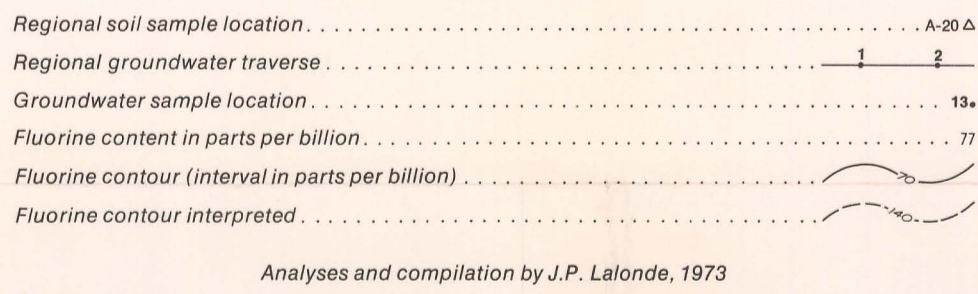


Figure 20c. Fluorine in groundwater.

Geology and locations of fluorite mines and occurrences after Wilson, 1929; Guillet, 1964; Hewitt, 1968 and MacDonald, 1970

To accompany GSC Paper 73-38 by J.P. Lalonde

Geological cartography by the Geological Survey of Canada

Base-map cartography by the Geological Survey of Canada, 1974, from maps published at the scale of 1:50,000 (Parts of Sheets 31 C/5, 6, 11, 12) by the Surveys and Mapping Branch, 1969, 1970, 1971

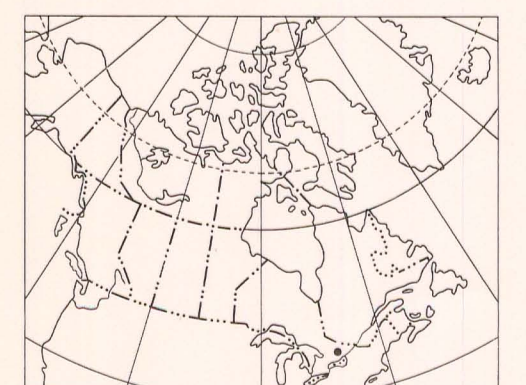
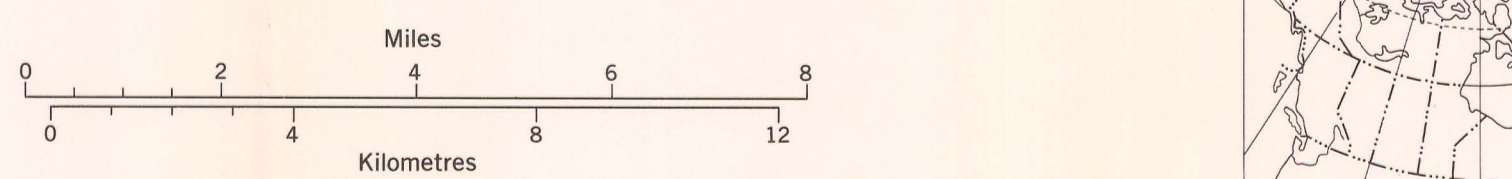


Figure 20. Madoc area.